

Estimates of Government Net Capital Stocks for 26 Developing Countries, 1970-2002*

Florence Arestoff † and Christophe Hurlin ‡

Abstract

We provide various estimates of the government net capital stocks for a panel of 26 developing countries over the period 1970-2001. Two kinds of internationally comparable series of public capital stocks are proposed. Firstly, we provide estimates based on the standard perpetual inventory method and various assumptions on initial stocks and depreciation rates. Secondly, we propose to take into account the potential inefficiency of public investments in creating capital with a non parametric approach. Three estimates of net capital stocks are then proposed for three assumptions on the public investment efficiency.

Key Words: Public Capital, Capital Stocks, Developing Countries. J.E.L Classification Numbers: C82, E22, E62.

World Bank Policy Research Working Paper 3858, March 2006

The Policy Research Working Paper Series disseminates the findings of work in progress to encourage the exchange of ideas about development issues. An objective of the series is to get the findings out quickly, even if the presentations are less than fully polished. The papers carry the names of the authors and should be cited accordingly. The findings, interpretations, and conclusions expressed in this paper are entirely those of the authors. They do not necessarily represent the view of the World Bank, its Executive Directors, or the countries they represent. Policy Research Working Papers are available online at <http://econ.worldbank.org>.

*We would like to thank Santiago Herrera for his support and his comments on a previous version of this work.

†EURISCO, University of Paris Dauphine. Place du Maréchal De Lattre de Tassigny. 75016 Paris. France. Email address: florence.arestoff@dauphine.fr.

‡LEO, University of Orléans. Rue de Blois. BP 6739. 45067 Orléans Cedex 2. France. Email address: christophe.hurlin@univ-orleans.fr.

1 Introduction

Since the seminal works of Aschauer (1989a,b), the measure of the productivity and the efficiency of infrastructure and public capital has been the subject of many empirical studies, for the OECD countries and especially for the United States¹ but also for the case of developing countries. One of the main differences between the papers concerning the OECD countries and those concerning the developing countries is that the first ones use rather the notion of "public capital" or "public spending" while the second ones generally emphasize the notion of "infrastructure". Thus, if we consider only the titles of the most recent papers devoted to the OECD countries and published in the most famous economic reviews, the terms of "public capital" (Hulten and Peterson, 1984 ; Aschauer, 1989b, Ram and Ramsey, 1989 ; Lynde and Richmond, 1992 ; Evans and Karras, 1994 ; Holtz-Eakin, 1994 ; Garcia-Mila, McGuire and Porter, 1996; Otto and Voss, 1998 ; Fernald, 1999) or "public spending" (Aschauer, 1989a ; Munnell, 1990a ; Sturm and De Haan, 1995 ; Devarajan, Swaroop and Zou, 1996) appear more often than the notion of "infrastructure" (Morrisson and Schwartz, 1996 ; Nadiri and Mamuneas, 1994). Moreover, when the notion of "infrastructure" is used in the title, the definition used to construct the data is sometimes equivalent to the definition of the public capital (Ford and Poret, 1991). On the contrary, the empirical studies devoted to developing countries are generally based on the past flows of public investments or on physical measures of infrastructure (private, but also public). It is for instance the case in the World Development Report for 1994 (Infrastructure and Development), Canning (1999), Canning and Pedroni (1999), Canning and Bennathan (2000), or in the recent study done by Easterly and Serven (2004) for Latin America.

There are many possible explanations of this dichotomy in the literature. Undoubtedly, one of them is the lack of homogeneous data on public capital stocks for the developing countries. Consequently, as noted by Pritchett (1996), "*there are few good estimates of the productivity of public capital [for developing countries] and what few there are, are of limited comparability*" (Pritchett, 1996, page 36). This last point, *i.e.* the comparability of the estimates of the public capital productivity, and consequently the homogeneity of the definition used for the capital stocks, is essential. This property of comparability is required if we want to assess the robustness of the estimates of the public capital productivity for a country and to compare it directly with the estimates obtained for OECD countries or for the other developing countries. It is notably the case when physical measures are used to estimate the social rate of return of infrastructure investments, as in Canning and Bennathan (2000) for instance.

In this study, we propose to estimate internationally comparable net public capital stocks for a panel of 26 developing countries over the period 1970-2000. The public

¹For more details on this subject see the surveys of Gramlich (1994), Sturm (1998) or Romp and De Haan (2005).

capital is considered here as mean of production. Given the definition of the System of National Accounts (SNA, 1993), the concept of capital stocks encompasses fixed capital as a set of tangible or intangible assets produced as outputs from the production processes that are themselves repeatedly or continuously used in other production processes for a period longer than one year. It is important to note that this definition also includes the intangible assets (e.g. computer software), contrary to the definition proposed in the 1968 SNA. The public capital stocks defined in this manner does not correspond to the notion of "infrastructure". It is obvious that the gross fixed capital formation of the public sector includes non-productive investments. Even if it would be possible to measure the public investments corresponding to the most important categories of infrastructure, "*it would be naive to believe that everything called infrastructure spending in the fiscal accounts is necessarily productive or that such spending should be the only -or even the main- indicator of public infrastructure performance*" (Calderon, Easterly and Serven, 2004, page 3). On the contrary, some infrastructure investments are financed by the private sector. This point is important since in many developing countries, as those in Latin America for instance, the private part of investments in infrastructure has recently increased, as an effect of the periods of macroeconomic adjustments.

Given these differences between the notion of public capital and that of capital infrastructure, we intend to evaluate specifically the public capital stocks in developing countries. In order to propose an international comparison, we consider the same environment of analysis as that generally used for the OECD countries. Naturally, the level of stock is not in itself helpful to policy development for a variety of reasons. The nature and the type of investments involved, the organizational and institutional arrangements, the nature of the available private capital, and so on, will influence the action to be taken. However, in an international perspective, such an evaluation provides limited guidance for evaluating the situation of under-provision, or on the contrary oversupply, of public investments. It is recognized that the situations of oversupply of public investments have a negative impact on the economy, as the situations of infrastructure shortage, since it draws scarce resources away from maintenance and operation of existing stocks. In this context, the use of a homogenous definition of public capital stocks (as it was the case for the homogenous definition of infrastructure stocks), whatever it is based on physical measures or on monetary flows, is the main ingredient required in the comparative study of the social rates of return of public investments.

For the same reasons, a similar work has been recently done by Kamps (2004) who has proposed various estimates of the government net capital stocks for twenty-two OECD countries . But, if we propose to evaluate the public capital productivity in developing countries as it is done for the OECD countries, it does not imply that we propose to estimate the capital stocks according to the same methodology. Except for the United States (Bureau of Economic Analysis), there are a few available databases of public capital stocks even for the major OECD countries². Consequently, several

²In his study devoted to 22 OECD countries, Kamps (2004) found 13 countries for which public capital stocks series are available from national sources. But, the definitions of public capital used are generally not homogeneous.

studies have been devoted to the estimation of net stocks using the investments flux: Sturm and De Haan (1995) for the Netherlands, Berndt and Hansson (1992) for Sweden, Ford and Poret (1991) for France and Japan and more recently Kamps (2004) for 22 OECD countries. All these studies use the same methodology to estimate the net capital stocks: the Perpetual Inventory Method (PIM, thereafter). This well known method consists in cumulating historical series of past investments and in deducting assets which were retired. However, it is recognized that this method based on monetary value of investments cannot be directly adopted in the case of developing countries. Pritchett (1996) showed that in many poor countries the problem is not that governments do not invest, but that these investments do not create productive capital. The cost of public investments does not correspond to the value of the capital stocks. In other words, in some developing countries, one dollar's worth of public investment spending does not create one dollar's worth of public capital. Pritchett estimates that only slightly more than half of the money invested in investment projects will have a positive impact on the public capital stocks in the developing countries. Consequently, under this assumption, the use of the PIM leads to overvalue the public capital stocks effectively available. This issue is generally related to the debate concerning the efficiency of public investments in the developing countries (World Bank, 1994).

That is why we propose two kinds of estimates of public capital stocks for each country of the panel. Firstly, we consider the estimates of net capital stocks based on the PIM. These estimates will be considered as benchmark in our econometric estimations of the public capital productivity in order to compare our results to those generally obtained for the OECD countries. This method requires a variety of assumptions concerning the depreciation patterns and the treatment of the initial stocks. We assume a geometric depreciation pattern with a time varying depreciation rates. For a given asset, the depreciation rate is generally considered to be constant. But, the structure of public investments in developing countries has deeply changed over the last decades. As the relative importance of different kinds of assets changes with time, so the average depreciation rate defined on the total stocks does. Consequently, the depreciation rate of the aggregated stocks cannot be considered constant. In this study, we use the structure of public investments in LA studied by Calderon, Easterly and Serven (2004) as a benchmark for the 26 developing countries of our panel. Given this decomposition, we estimate an aggregated time varying depreciation rate. The initial stocks are chosen according to the same methodology as that used by Kamps (2004) for OECD countries. For each country of our panel, an artificial investment series is constructed since 1880. These series are used as inputs to estimate the initial capital stocks. Finally, we analyze the robustness of our estimates to these two main assumptions.

Secondly, we propose to evaluate the capacity of public investment to generate public capital in developing countries. For that, we intend to link the monetary flows of sectoral investments with the corresponding physical measures of capital stocks effectively available and taken from the Canning' database (1998). We consider four sectors (electricity, telecommunications, roads and railways) of two Latin American reference countries (Mexico and Colombia). For each country and each sector, the analysis is done over a period in which the public infrastructure investments represent more than 85% of the total sectoral investments. Then, we estimate a relationship between the

increase in the monetary value of the stocks and the current monetary value of public investments. This relation gives us the value of the public capital produced by one dollar's worth of government investment spending. If the PIM gives a correct approximation of the public stocks, we should observe the following relationship: one invested dollar should increase the stock value with one dollar. On the contrary, if it is observed that the stocks value is increased with less than one dollar, it implies that the PIM overvalues the public stocks. But, more originally, this approach also gives us an estimate of the part of the public investments that are really "productive", *i.e.* that are efficient in creating capital.

Since no natural specification of this efficiency function can be justified, we propose to estimate it by a non parametric method. We consider the road sector in the United States as a benchmark and we compare the monetary valorization of the number of road kilometers (Canning, 1998) to the flows of public investments in road and highways. The results show that, in this case, the cumulated investment flows represent a good proxy for the capital stocks. On the contrary, the same methodology applied to our two reference developing countries shows that there is a large discrepancy between the amount of investments and the value of the increase in stocks. Moreover, we show that the estimated efficiency function in these countries is almost linear, *i.e.* the component of the public investments really productive can be approximated by a constant fraction in the total investments. We assume that this last result can be generalized to all the countries of our panel and we estimate new series of net public capital stocks by using only a fraction of investments to improve the stocks value. Naturally, we do not assume that all developing countries have the same ratio of "productive" investments to the total investments. For each country, we propose a sensitivity analysis and build three estimates corresponding to three different calibrated values of this ratio.

The first section of this study is devoted to the estimates of the net capital stocks using the PIM. In this section, the depreciation profiles, the choice of initial stocks and the robustness of our estimates to these two assumptions are successively presented. The second section is devoted to the measure of public investments' efficiency. The conclusions are presented in the last section.

2 Government Net Capital Stocks in Developing Countries

In this article, we propose to estimate government net capital stocks at constant prices for a panel of developing countries. Our choice to estimate net capital stocks rather than gross capital stocks is clearly related to our general aim which is to evaluate the productivity of public capital in these countries. The gross capital stock measures the value of assets at their new prices regardless their age. On the contrary, the net capital stock corresponds to the value of assets held by the government at the price of new assets minus the cumulative value of depreciation or, more generally minus the consumption of fixed capital. The depreciation corresponds to the decline of the current value due to the physical deterioration of assets. But, the net capital stock accounts also for

economic depreciation, *i.e.* the loss of value. Thus, the net public capital stock is an estimate of the market value of the fixed assets held by government. More precisely, if markets for used capital assets were perfect, the net capital stock would be a measure for the present value of future capital services. As noted by Kamps (2004), this market value corresponds to the so-called productive capital stock defined in dynamic general equilibrium models or used in empirical measures of productivity (OECD, 2001b).

In order to estimate these net public capital stocks, in a first step we propose to estimate benchmark series based on the perpetual inventory method.

2.1 The Perpetual Inventory Method

The PIM consists in cumulating historical series on past investments and deducting assets which are retired. To our knowledge, it is the only method³ used in the literature devoted to public capital or infrastructure capital stocks, if we except the Canning's database (1998) based on physical measures of infrastructure. The estimation of the net capital stocks by the PIM requires the following information:

- Sufficiently long gross investment time series, valued at constant prices.
- The law of depreciation of capital goods, and more precisely the time profile of the depreciation rate.
- An evaluation of the initial net capital stocks.

The estimation is carried out for the 26 following developing countries: Botswana, Burkina Faso, Cameroon, Colombia, Costa Rica, Dominican Republic, Fiji, Ghana, India, Indonesia, Kenya, Malaysia, Mauritius, Mexico, Morocco, Pakistan, Panama, Paraguay, Peru, Philippines, Thailand, Tunisia, Turkey, Uruguay, Venezuela, RB and Zimbabwe. These countries have been selected for their data availability and for their relative political and historical stability in order to avoid taking into account the damages of particular phenomena such as war, civil war etc. in the estimates of capital stocks. Two countries (Mexico and Turkey) are OECD members, but their capital stocks are not estimated in Kamps (2004). Our data on public investment are taken from the World Bank World Development Indicators (WDI thereafter). The series correspond to the capital expenditure for central government only⁴. Capital expenditure is spending to acquire fixed capital assets, land, intangible assets, government stocks, and nonmilitary, nonfinancial assets. Also included are capital grants. The investments expressed in constant prices are computed by deflating these series with the GDP implicit price deflator⁵. Indeed, the price indexes to derive stock estimates for current-cost and

³An alternative method consists in estimating directly the stock for a benchmark year using disaggregated values for each assets. However, with this method, only gross capital stocks can be estimated. The net capital stocks are always estimated by a variant of PIM. Since in this paper, we are interested in net capital stocks, the PIM approach cannot be avoided.

⁴WDI Code: GB.XPK.TOTL.CN. Source International Monetary Fund, *Government Finance Statistics Yearbook*.

⁵WDI Code: NY.GDP.DEFL.ZS. The base year is not the same for all the countries (see WDI, 2004).

real cost estimates are generally the same as those used to derive real GDP and its components (see for instance, Bureau of Economic Analysis, 2003, page M-8).

Figure 1 displays the average government capital expenditure - GDP ratio for a reduced sample of 19 developing countries⁶ over the period 1974-1997 (left hand side scale) and the standard deviation (right hand side scale). The first remark is that, on average, the public investment ratios observed for these countries are very close to the values observed for OECD countries. The mean of the capital expenditure ratios in our sample is 4.42%. This value roughly corresponds to that observed on average for the OECD countries before the middle of the 1970s (Romp and De Haan, 2005). As it was stated for OECD countries (Ford and Poret, 1991; Sturm, 1998; Kamps, 2004), the average public investments - GDP ratio also decreases for the developing countries of our sample. The average ratio was 5.15% for the period 1974-1984, and only 3.80% after 1985. Two remarks can be made at this step. Firstly, the decline of public capital spending in the developing countries of our sample is, on average, comparable to the decline observed in the 1970s in the OECD countries. For instance, the public investment to GDP ratio for the United States was equal to 6.10% in 1961 and was only slightly superior to 3.00% in 1997. In France, this ratio was relatively stable, around 3.5%, for the period 1960-1990. However, in the same time the average part of the other public expenditures in the GDP increased from 40% during the period 1960-1979 to more than 50% during 1990-1997 (Hurlin, 2000). Secondly, this decline has occurred later in developing countries than in OECD countries. It seems that, on average, the decline in the ratios of government capital expenditure to GDP started after the beginning of the 1980s, and mainly occurred in this decade. This observation is identical to that made by Calderon, Easterly and Serven (2004) for nine Latin American economies where the decline was partly due to the context of fiscal austerity of the 1980s and 1990s. On the contrary, it is largely acknowledged that the decline of OECD public investments mainly occurred in the 1970s and even at the early beginning of 1970s for the United States if we consider infrastructure investments in roads (Fernald, 1999). Finally, it is important to remark that the average ratio reached at the end of 1990s in the developing countries of our sample, *i.e.* 3.70%, remains superior to the average ratio observed in OECD countries at the same period, *i.e.* around 3.00%.

These conclusions based on average ratios hide a very heterogeneous reality. Figure 2 displays the government capital expenditure - GDP ratios for the 26 countries of our sample. This ratio varies considerably across countries. Over the period 1974-1997, the average ratio ranged from 1.73% for India to 9.26% for the Morocco. Moreover, the trends are very heterogeneous. For instance, the decrease in the public investment ratios is very pronounced during the 1980s for most of the Latin American countries of our sample (Mexico, Panama, Peru, and Venezuela), except Colombia and Paraguay where the decline mainly occurred during the 1970s. In the same time, the government capital expenditures are relatively stable in Thailand. This opposition between the Latin America and one of the East Asian Miracle Economies (World Bank, 1994)

⁶Since our panel is unbalanced, the average ratios displayed on Figure 1 are computed using a reduced and balanced sample of 19 countries over the period 1974-1997. The excluded countries are the followings: Botswana, Burkina Faso, Cameroon, Fiji, Ghana, Mauritius and Zimbabwe.

reflects the oppositions observed by Calderon, Easterly and Serven (2004), when they consider physical measures of infrastructure. The only global and common observation that we can make at this step concerns the volatility of the public investment ratios. The variances of these ratios in the developing countries are clearly superior to those observed in the OECD countries. Using Kamps's database (2004), Romp and De Haan (2005) found that the standard deviation of the government investment ratio for OECD 22 countries during the period 1960-2001 ranged from 1.00% to 1.80%. On the Figure 1, it can be observed that the corresponding standard deviation for developing countries during the period 1974-1997 ranges from 1.75% in 1996 to 4.28% in 1977. This high volatility is clearly observed on Figure 2 for the majority of the countries of our panel.

This result is undoubtedly linked to the particular status of the public investments component in the total public expenditures. Much, although not all, of the public spending decline can be traced to fiscal adjustment. As it was earlier noted by Oxley and Martin (1991) "*the political reality is that it is easier to cut-back or post-pone investment spending than it is to cut current expenditures*". Consequently, the public investment is generally more reduced during times of fiscal stringency than the other public expenditures. This observation has been largely documented for OECD countries (Sturm, 1998), but also for Latin American countries (Calderon, Easterly and Serven, 2004) or for some African countries (World Bank, 1994). The developing countries, as other countries, lower their budget deficit mainly by cuts in capital spending. However, the amplitude of these adjustments and their frequencies seem to be more important in the developing countries.

As it was previously mentioned, two other elements are now required to estimate the net capital stocks: the time profile of the depreciation rate and an evaluation of the initial stocks.

2.2 Depreciation Profiles

In the PIM, the pattern of depreciation charges for a given assets is determined by its "depreciation profile". This profile describes the pattern of how, in the absence of inflation, the price of an asset declines as it ages. In this study, we consider a geometric pattern for the depreciation of public capital. For any given year, the constant-dollar depreciation charge is obtained by multiplying the depreciation charge in the preceding year by one minus the annual depreciation rate. It corresponds to the depreciation profile generally used in the literature devoted to the estimation of net capital stocks (private or public) and in particular used by the BEA for the United States to evaluate the majority of assets, including government assets (Bureau of Economic Analysis, 1999 and 2003.). This choice is also justified by the fact that the available data suggest that geometric patterns closely approximate the actual profile of price declines for a number of assets⁷ (Hulten and Wykoff, 1981). That is why, the geometric pattern was used to measure the depreciation of public capital by Kamps (2004a,b) for OECD countries, Sturm and De Haan (1995) for the Netherlands, Berndt and Hansson (1992) for Sweden, Ford and Poret (1991) for France and Japan. The only exception is Declercq (1994)

⁷Hulten and Wykoff show that in a collection of assets, if each asset depreciates as an on-hoss shay, the aggregated stock depreciates with a near-geometric profile.

who used physical measures and technical mortality tables to estimate the net capital stocks of infrastructure in France.

In this context, the issue is to choose the appropriate geometric depreciation rate and mainly to decide if this depreciation is constant over time. Given the level of aggregation of our public investments data, we decide to consider a time varying depreciation profile⁸ as it was done by Kamps (2004) for OECD countries or Declercq (1994) for France. The reason of our choice is the following: generally, for a given asset, the depreciation rate is assumed to be constant over time, except for some assets related to information and communication technology (BEA, 1999). However, the structure of public investments has deeply changed over the last decades. As the relative importance of the different kinds of assets changes with time, so the average depreciation rate defined on the total stock does. Consequently, the depreciation rate of the aggregated stock cannot be assumed constant. For instance, Kamps (1994) shows that the average depreciation rate for public capital in the United States, approximated by an implicit scrapping rate defined as the quotient of total depreciation to the total net stock, has slowly increased during the period 1960-2001. He explains this increase by the increase of the proportion of the assets having relatively short lifetime comparing to all the other assets. Thus, the time varying depreciation profile of the aggregated stock of capital is directly related to the changes in the composition of public investments. These changes and their consequences on the public capital productivity have been largely studied for the United States (Gramlich, 1994; Cain, 1997; Fernald, 1999; etc.), mainly because sufficiently disaggregated data are available in the "Fixed and Reproducible Tangible Wealth" BEA's database. In this database, the total net stock of government capital (Federal, State and Local) is divided in two parts, equipment and structures, and this last component represents roughly 85% of the total stocks. For the structures, the BEA distinguishes six broad categories⁹ of assets: Buildings (including residential, industrial, educational, hospital and other), Highways and Streets, Military facilities, Conservation and Development, Sewer systems structures, Water supply facilities and Other structures. The most important categories during the period 1990-1996 are the buildings (including educational buildings) and the highways and streets (respectively around 30% and 26% of the total stocks). We can observe on Figure 3 that the part of these two main components in the total government net stocks has slowly decreased since the 1970's. At the same time for instance, the part of the net capital stocks corresponding to water and sewer systems has increased. There are numerous reasons which could explain these modifications in the composition of the public capital stocks of the United States: the achievement of the great highways projects such as the *Interstate Highway System* (Fernald, 1999), the changes in the demography structure which have affected all the investments related to education (Sturm, 1998) or more originally, the legal constraints or the federal subvention¹⁰ (Hulten and Schwab, 1997).

⁸Kamps (2004) and Declercq (1994) are the only examples of the use of a time varying depreciation profile for public capital stocks.

⁹More precise sub-categories are also available.

¹⁰Hulten and Schwab (1997) point out the influence of the *Federal Water Pollution Act* (1972) and the *Clean Water Act* (1977) on the amount of subventions devoted to the water and sewer systems investments.

To the best of our knowledge, there is no similar study devoted to the composition of public capital stocks in developing countries or even in the major OECD countries except the United States. However, it is reasonable to assume that, in developing countries, the structure of public capital stocks has changed over the last decades, even if these changes are not similar to those observed for the United States. This evolution of stocks can be pointed out using the evolution of the composition of investments. There are few studies devoted to the structure of public investments in developing countries over long period of time. One exception is the recent study proposed by Calderon, Easterly and Serven (2004) for nine Latin American countries¹¹ over 1980-1998. Their decomposition is based on six broad categories: road, railways, electricity, gas, water and telecoms. On Figure 4, the average proportions of these categories in the total public investments for these nine countries are reported. Even if this structure of investments cannot be directly compared to the structure of the net stocks of United States, we still can observe some important differences. For instance, the proportion of investments in roads in LA increased during the 1980's, while we observe a decrease of the part of this kind of investments in US during the same period (Fernald, 1999). The part of investments in railways and electricity in LA decreased quickly at the end of 1980's and the early of 1990's due to privatisations (Calderon, Easterly and Serven, 2004) and naturally we do not have the same evolution for the US investments during the same period. These observations confirm our conviction that we cannot use the structure of public investments / stocks in US or other OECD countries as a proxy for the developing countries. Consequently, it implies that it is not reliable to use the same time profile of depreciation for developing countries as for OECD countries since this time profile is directly related to the composition of stocks. For these reasons, we propose to estimate a time profile of depreciation rates specific to developing countries¹² and based on the changes of the composition of public investments observed in LA.

In order to estimate a time profile of the depreciation rates for the aggregated capital specific to developing countries, we propose the following definition. The time varying depreciation rate is defined as a weighted average of the constant depreciation rates of the six components of public investments defined in Calderon, Easterly and Serven (2004). This estimate requires two inputs: constant depreciation rates for the six types of assets used in the decomposition and the weights of these assets in the total stocks. For the first input, we propose to use the BEA depreciations rates. This is appropriate insofar as country-specific factors influence service lifetime. In particular, recurrent infrastructure expenditures for operation and maintenance are generally cut along with investments, and this decline may accelerate the depreciation of stocks. However, we do not have information about the potential reduction of the service lifetime of public investments in developing countries. Moreover, the literature devoted to public capital stocks does not assert that services lifetime of equipments or structures is shorter in developing countries than in other countries. The main particularity raised in the case

¹¹These countries are: Argentina, Bolivia, Brazil, Chile, Colombia, Ecuador, Mexico, Peru, Venezuela, R.B. de.

¹²So we will assume that the time profile is the same accross countries, as it was done in Kamps (2004) or Maddison (1995).

of developing countries is that public investments may not create productive capital (Pritchett, 1996) and not that the depreciation of stocks is more accelerated.

The BEA computes net capital stocks from a detailed division of assets (Bureau of Economic Analysis, 1999, tables C). Ideally, depreciation profiles should be based on empirical evidence on used asset prices in resale markets. Such an evaluation is possible only for some assets (autos, computers for instance). In this case, the profile can be estimated using prices in the corresponding resale market. For all other assets, geometric profiles are used. For a given type of asset, the estimated rate of depreciation is derived from the estimates of Hulten and Wykoff (1979, 1981). The depreciation rate is determined by dividing the declining-balance rate¹³ by the corresponding assumed service life expressed in years. Hulten and Wykoff obtained that, on average, the declining-balance rate for producer's durable equipment was 1.65 and that for non-residential structures was 0.91. Given the BEA classification, we choose the assets that are the closest to the decomposition of investments proposed by Calderon, Easterly and Serven (2004). The geometric depreciation rates, the underlying declining-balance depreciation rates and the services lives used by BEA for these assets are reported in Table 1. For each type of investment two depreciation rates are proposed by the BEA: one for equipment and one for structures. The only exceptions are the investments in roads, gas and water systems for which only structure assets are reported. Taking into account these information, we compute a weighted average of the rates on structures and equipment for all the six components of public investments used in Calderon, Easterly and Serven (2004). The weights are defined by the average part of equipment assets (respectively structure assets) in the total government net stocks of the United States over the period 1950-1996. The weights used are then defined by 83.17% for structures and 16.83% for equipments. The corresponding depreciation rates used for the six components of public investments are reported in Table 2. The mean of these depreciations rates is equal to 2.68% which is roughly the same value used by Kamps in his study of OECD countries until the 1970's. Logically, the lowest values of depreciation rates are obtained for roads and water systems and the highest value corresponds to the telecommunication sector where the service lifetime of assets is the shorter.

The second input required to estimate the depreciation rate for the aggregated stocks is the weight of each type of assets in the total stocks. Let us consider the general case with m types of assets. For each asset, the capital stock at the beginning of period t is denoted K_{it} , with $i = 1, \dots, m$ and $t = 1, \dots, T$. The corresponding depreciation rate, denoted δ_i , is assumed to be constant over time. If we consider a perpetual inventory method, and if we note $I_{i,t}$ the gross investment in the i^{th} asset for the current period, we have:

$$K_{i,t+1} = (1 - \delta_i) K_{it} + I_{it} \quad i = 1, \dots, m \quad (1)$$

Then, the process which generates the total stocks $\tilde{K}_t = \sum_{i=1}^m K_{it}$ is defined as:

$$\tilde{K}_{t+1} = \sum_{i=1}^m (1 - \delta_i) K_{it} + \tilde{I}_t \quad (2)$$

¹³The declining balance rate is equal to the multiple of the comparable straight-line rate.

where $\tilde{I}_t = \sum_{i=1}^m I_{it}$ denotes the total investments. This process of accumulation can be rewritten using a the time varying depreciation rate, denoted $\tilde{\delta}_t$, as:

$$\tilde{K}_{t+1} = (1 - \tilde{\delta}_t) \tilde{K}_t + \tilde{I}_t$$

Identifying equations (1) and (2), it is possible to derive the aggregated depreciation time profile by the variable as a weighted average of constant specific depreciation rates. In this case, the weights, denoted W_{it} , are defined by the proportion of the capital stocks K_{it} in the total stocks \tilde{K}_t at time t .

$$\tilde{\delta}_t = \sum_{i=1}^m \delta_i W_{it} = \sum_{i=1}^m \delta_i \frac{K_{it}}{\tilde{K}_t} \quad (3)$$

However, we do not have some information about the ratios K_{it}/\tilde{K}_t since there are no available data on sectoral public capital stocks. A solution would consist in approximating the weights W_{it} by the ratio of investments I_{it}/\tilde{I}_t . In this case, the time profile of the depreciation rates would be estimated by:

$$\tilde{\delta}_t \simeq \tilde{\delta}_t^* = \sum_{i=1}^m \delta_i \frac{I_{it}}{\tilde{I}_t} \quad (4)$$

The sequence of estimated depreciation rates $\tilde{\delta}_t^*$ based on this approximation over the period 1980-1998 is reported on Figure 5. The ratios I_{it}/\tilde{I}_t are computed using the data of Calderon, Easterly and Serven (2004) for the following six components of investments: road, railways, electricity, gas, water and telecoms. The constant depreciation rates δ_i , $i = 1, \dots, 6$, correspond to the values reported in Table 2. We can observe that the estimated depreciation time profile slowly decreased from 2.74% in 1980 to 2.38% in 1998. This decrease mainly occurred after the end of 1980's. This stability of the depreciation rates in the 1980's (between 2.75% and 2.80%) and the slight decrease in the 1990's is clearly visible when the depreciation rates are smoothed. Figure 5 displays the depreciation rates smoothed by a simple Hodrick and Prescott (1980) filter. Two values of the smoothing parameter recommended for annual data are used in order to assess the robustness of our results: the standard value of 100 proposed notably by Backus and Kehoe (1992), but also a value of 6.25 recommended by Ravn and Uhlig (2002). Using these parameters, the smoothed time profiles of depreciation are similar. The smoothed depreciation rate ranges from 2.77% in 1980 to 2.50% in 1998 and we can distinguish two periods: a period of stability in the 1980's and a period of decrease in the 1990's. Similar conclusions (see Figure 1 in Appendix B.1) are obtained if we use a local regression on time (or *Loess* regression, Cleveland and Devlin, 1988) with an optimal smoothing parameter chosen according to a modified AIC criterion.

This slight decrease of the depreciation rates is in opposition to the depreciation profile observed by Kamps (2004) for OCDE countries after 1960. Indeed, Kamps (2004) determines the depreciation profile for the OECD countries by approximating an implicit scrapping rate calculated for the United States over the period 1960-2000.

He finds that this scrapping rate has tended to rise over time. Consequently he assumes a constant depreciation rate of 2,50% for the period 1860 to 1960, and an increasing rate for the period 1960-2001. During this last period, the depreciation rates for OECD countries are assumed to increase gradually from 2.50% to 4.00%. He explains this increase of depreciation rates by the increasing weight of short lifetime assets. However, considering the Calderon, Easterly and Serven (2004) decomposition in LA countries since the 1980's, we observe an increasing weight of assets with relatively long service lifetime, as roads and water systems (Figure 4). That is why we found that the aggregated depreciation rates for developing countries had decreased. This result does not exclude the possibility of an increase in the next decades due, for instance, to the investments in information and communication technologies. At the same time, our results could be interpreted as an increase in the assets lifetime imposed by a lack of replacement investments.

One of the major drawbacks of this first approximation comes from the fact that the weights are defined by the ratios of investments. These ratios reflect the composition of new equipments or structures, and not the composition of the stock determined by the past investments. That is why, we propose a second approximation of the weights used in the definition (3) of the aggregated depreciation rates. Let us consider a perpetual inventory method for each asset (equation 1) . For $t \geq 2$, we have:

$$K_{it} = \sum_{h=0}^{t-2} (1 - \delta_i)^h I_{i,t-1-h} + (1 - \delta_i)^{t-1} K_{i1} \quad (5)$$

where K_{i1} denotes the initial stock for the asset i . Let us denote $\tilde{K}_t = \sum_{i=1}^m K_{it}$ the total stock at the beginning of the period t . Then, the weight $W_{i,t}$ of the i^{th} asset at time t in aggregated depreciation rate is defined as:

$$W_{it} = \left[\sum_{h=0}^{t-2} (1 - \delta_i)^h I_{i,t-1-h} + (1 - \delta_i)^{t-1} K_{i1} \right] \times \left[\sum_{i=1}^m \sum_{h=0}^{t-2} (1 - \delta_i)^h I_{i,t-1-h} + \sum_{i=1}^m (1 - \delta_i)^{t-1} K_{i1} \right]^{-1} \quad (6)$$

Naturally, in this expression the initial conditions $\{K_{i1}\}_{i=1}^m$ are unknown. Let us denote β_i the ratios of initial value K_{i1} to the initial total stock \tilde{K}_1 and α the ratio of total public investments to the total public capital stock at the first period, $\alpha = \tilde{I}_1 / \tilde{K}_1$. The weights W_{it} can be rewritten as:

$$W_{it}(\beta, \alpha) = \left[\sum_{h=0}^{t-2} (1 - \delta_i)^h I_{i,t-1-h} + \left(\frac{\beta_i}{\alpha} \right) (1 - \delta_i)^{t-1} \tilde{I}_1 \right] \times \left[\sum_{i=1}^m \sum_{h=0}^{t-2} (1 - \delta_i)^h I_{i,t-1-h} + \left(\frac{\tilde{I}_1}{\alpha} \right) \sum_{i=1}^m \beta_i (1 - \delta_i)^{t-1} \right]^{-1} \quad (7)$$

with $\beta = (\beta_1, \dots, \beta_m)$. The ratio α of public investment to public capital stock is calibrated to the average value observed¹⁴ for the United States over the period 1950-1996, *i.e.* 0,0573. A sensitivity analysis to the value of this parameter will be proposed with five values of the parameter $\alpha = \{0.01; 0.04; 0.05; 0.06; 0.10\}$. Like the previous approximation, the public investments I_{it} are taken from the data of Calderon, Easterly and Serven (2004) with $m = 6$ components of investments. The constant depreciation rates δ_i are taken from Table 2. Finally, the ratios of the initial values of stocks β_i are calibrated¹⁵ to the mean of the corresponding ratios of investments over the period 1980-1998 for the considered LA countries.

The sequence of the corrected depreciation rates $\tilde{\delta}_t^c = \sum_{i=1}^m \delta_i W_{it}(\alpha, \beta)$ based on this approximation is reported on Figure 6. For the benchmark values of parameter α and β , the decrease of the depreciation rates is confirmed. However, this decrease is less important than the decrease observed with the previous approximation. The depreciation rate ranges from 2.639% in 1998 to 2.707% in 1980. Logically, the profile of depreciation is smoother than the previous profile computed with ratios of investments. Consequently, whatever the value of the smoothing parameter, the HP trend components are similar to the series of estimated depreciations rates. The results are similar when we consider different values of the ratio α of public investments to public capital stock at the first period. A sensitivity analysis of our results to the values of $\alpha = \{0.01; 0.04; 0.05; 0.06; 0.10\}$ is reported on the Figure 7. Given these results, we propose to use our estimated series $\tilde{\delta}_t^c$ and $\tilde{\delta}_t^*$ as benchmark depreciation rates for the developing countries of our sample. More precisely, we consider the smoothed values of these depreciation rates obtained by a local regression (LOESS) over time (see Appendix A.1). We prefer this smoothing method to the HP filter, since it is well known that the HP filter has not good properties at the extreme points of the sample. For the period before 1980, we assume that the depreciation is constant: its value is fixed to the first estimated value for 1980, *i.e.* 2,71% for the corrected depreciation rate $\tilde{\delta}_t^c$ and 2,77% for the non corrected depreciation rate $\tilde{\delta}_t^*$. The corresponding depreciation time profiles are displayed on Figure 8 and the values are reported in Table A3 (Appendix B.2). In a next section, we will analyze the sensitivity of our net capital stock estimates to the depreciation pattern used. Moreover, apart from these quantitative results, we are convinced that the use of a slight decreasing (or at the most constant) depreciation time profile for developing countries is justified for the arguments mentioned above. Given the decomposition of investments observed by Calderon, Easterly and Serven (2004) for LA countries over the period 1980-1998, we think that the increasing depreciation time profile used for OECD countries could not be used as a benchmark for developing countries.

¹⁴A similar value of 0.0666 is founded if we consider that in average the ratio of public capital stocks to GDP is near to 0.60 and the ratio of public investments to GDP is near to 0.04, as it is observed for OECD countries

¹⁵These values, expressed as a percentage, are the followings. Road: $\beta_1 = 14.70$, Railways: $\beta_2 = 9.60$, Electricity: $\beta_3 = 46.27$, Gas: $\beta_4 = 0.53$, Water: $\beta_5 = 12.97$, Telecoms: $\beta_6 = 15.89$. A analysis of sensitivity was done with $\beta_i = 1/6$ for all assets results to the same qualitative depreciation profile for all the considered values of α . The maximum value of the depreciation rate was then 2.68% and the minimum achieved in 1998 was around 2.56%.

2.3 Initial Stocks

The second input required in the application of the perpetual inventory method is the initial public capital stock. When no information about the initial value of the capital stock is available, one of the possible solutions consists in assuming a null initial stock. However, in order to limit the consequences of this assumption, we will consider the same assumptions as those used by Jacob, Sharma and Grawbowski (1997) or Kamps (2004) for OECD countries. For each country of our panel, an artificial investment series is constructed since 1880 by assuming that investment increased by 4 percent per year and finally reaching its observed level at the first date of our sample. This series is used as input to estimate the initial capital stock for each country. The stock in 1880 is set equal to zero and the depreciation rate used corresponds to the first value of our estimated series $\tilde{\delta}_t^c$, *i.e.* 2.71%. We will analyze in the next section the sensitivity of our net capital stocks to the choice of initial stock, but we need to remind here that this influence decreases over time. Indeed, for a time-varying depreciation rate δ_t , the net public capital stock at time t , denoted K_t , is defined as:

$$K_{t+1} = \sum_{h=0}^{t-1} \left[\prod_{z=0}^{h-1} (1 - \delta_{t-z}) \right] I_{t-h} + \prod_{z=0}^{t-1} (1 - \delta_{t-z}) K_1 \quad (8)$$

where K_{i1} denotes the initial stock and where $\delta_t < 1$. Consequently, an error on the value of the initial net capital stock has therefore only a temporary effect.

To sum up, in order to estimate our benchmark net capital stocks by the perpetual inventory method, we made two main assumptions. The first concerns the initial capital stock. This initial value of the net capital stock is constructed from an artificial investment series which starts in 1880. The second main assumption concerns the depreciation pattern. As it was generally the case, we choose a geometric depreciation pattern. But, we also use a time varying depreciation rate profile, with a slight decrease after the beginning of the 1980's. This decrease reflects the changes in the composition of the public investments observed for the LA countries and considered as a benchmark for our sample of developing countries.

2.4 Net Capital Stock Estimates for Developing Countries

Figure 9 displays the evolution of the ratio of the public net capital stock to GDP for the 26 countries of our panel. The capital stock estimates are expressed in national currency and valued with national constant prices¹⁶. Logically, we found similar conclusions as those raised for the public investments in the previous section. In order to compare our benchmark results with those of Kamps (2004a) for OECD countries, the values of the public capital GDP ratio for four reference years (1975, 1980, 1990 and 1995) are also displayed in Table 3. The main difference is that we observe an increase of the average net capital stock ratio for our panel of developing countries, while Kamps observes a decline of the corresponding ratio for OECD countries. In our sample, the average ratio increases from 58.6% in 1980 to 63.1% in 1990. When we consider

¹⁶The base year is not the same for all countries and corresponds to the base year used for the GDP deflator. The GDP used is also expressed in constant prices, WDI code: NY.GDP.MKTP.KN.

a balanced panel of 19 countries¹⁷, the corresponding values are 59.2% and 64.3%. During the same period, the estimated ratios for 22 OECD countries decreased from 57.8% to 55.3% (Kamps 2004, Table 2, page 28). At least two factors could explain this evolution: the first is the depreciation pattern¹⁸, the second and most important is the delay in the decline of public investments in developing countries. As it was previously mentioned, in our sample the average ratio of public investments to GDP has declined only after the middle of the 1980s, while in the most of OECD countries this evolution has occurred in the 1970s. Consequently, the corresponding decrease in the stock ratios is logically delayed in our sample. More precisely, we do not observe a decrease as in the OECD countries, but only a drastic decrease in the growth of the capital to GDP ratio: this ratio increased from 55.5% to 58.6% from 1975 to 1980, but only from 63.1% to 64.2% from 1990 to 1995. If we consider the balanced panel of 19 countries, we observe a decrease as severe as that reported by Kamps, since the ratio declined from 64.3% in 1990 to 61.8% in 1995. In other words, the PIM approach allows us to date the deceleration of the growth of the public capital stock, on average, at the beginning of the 1990s, *i.e.* at least two decades after the deceleration observed in the United States (Fernald, 1999). Moreover, at the end of the 1990s, the average capital to GDP ratio in developing countries remained similar, or even superior, to that observed in OECD countries. However, given the drawbacks of the use of the PIM for the case of developing countries this conclusion cannot be interpreted as the diagnostic that, relatively to their GDP, many developing countries have no shortages of public investments or capital stocks. Our estimates only allow us to point out the deceleration of the public capital stock growth in 1990s, at least one decade after the same phenomenon was observed in the OECD countries. This evolution can be viewed as a consequence of the fiscal adjustments (but this is not the only factor) implemented in the 1980s. Except if we assume that the efficiency of public investments in creating public capital dramatically changed over the period 1975 -1995, these observations based on the PIM remain valid if we consider the true part of public investments really productive in creating public capital. Nothing allows us to think that any global improvement in the efficiency of public investments would compensate the decrease of the ratio of public capital stocks to GDP during the 1990s. Finally, as pointed out by Kamps (2004a), the main advantage of these benchmark estimates is that they rely on the same methodology and on homogenous investment data across countries.

These global evolutions hide heterogeneous trends among the countries of our sample. Between 1975 and 1980, public capital expressed as part of GDP has increased in 14 countries out of 24. Between 1990 and 1995, this ratio increased only for 10 countries. However, despite these evolutions, there exists a relative stability of the group of countries with the highest ratios of public capital. If we compare the ranking according this ratio in 1975 and in 1995, 9 countries are always among the 10 highest ratios (Table 3). These countries are Botswana, Cameroon, Dominican Republic, Fiji,

¹⁷Excluded countries are: Botswana, Burkina Faso, Cameroon, Fiji, Ghana, Mauritius and Zimbabwe.

¹⁸For a given GDP, the decrease of the depreciation rate induces an increase of the capital stock to GDP ratio. However, the depreciation pattern does not explain a substantial part of the evolution of our capital stock estimates, as we will see in the section devoted to the robustness of our estimates.

Indonesia, Kenya, Morocco, Panama and Tunisia. Only Colombia has been excluded from this group between 1975 and 1995 and has been replaced by the Venezuela. And, since the Colombia witnessed an infrastructure investment expansion during the late 1990s, this evolution would not be observed if the reference was taking at the early of 2000s. Thus, these benchmark estimates based on the PIM show a relative stability of the ranking of the countries according to their ratio of public capital stocks to GDP. Naturally, the robustness of these estimates must be evaluated.

2.5 Robustness of the Public Capital Stock Estimates

The drawbacks of the perpetual inventory method are well known. The largest one is that the use of the PIM requires a variety of assumptions concerning depreciation patterns and the treatment of an initial stock. That is why we now propose to evaluate the robustness of our public capital stock estimates to these assumptions as it was done by Kamps (2004a). For this purpose we will consider four reference countries: Pakistan, Peru, Philippines and Tunisia. For each assumption used in this section, we will estimate new net capital stocks series for these four countries. These series will be compared with our benchmark PIM estimates from the point of view of the levels but also from the point of view of growth rates.

Concerning the depreciation patterns, two assumptions are made: the first is the geometric pattern and the second assumption is the use of a time varying depreciation rate. Firstly, let us consider the influence of time profile of the depreciation rates on our estimates. As it was shown in the previous section, our aggregated depreciation rates are estimated using the composition of public investments in LA as a benchmark for all the developing countries of our sample. Using this method, we found a slight decreasing time profile reflecting the decline of the part of public investments in assets having short life services. The influence of these assumptions on our final estimates must be evaluated. For that, for each reference country two other capital stocks are estimated with two alternative assumptions on the depreciation time profile. For the first estimate we consider a constant annual depreciation rate of 4.0% over the period 1970-20002. If we admit that on average the declining-balance rate for equipment is 1.65 and 0.91 for non residential structures, it corresponds to a service lifetime of 41.25 years and respectively 22.75 years. This values of the depreciation rate is largely superior to the values considered in our benchmark estimates which range from 2.64% to 2.71%. For the second estimate, we assume that the depreciation time profile for developing countries is exactly the same as that estimated by Kamps (2004a) for OECD country. The author assumes that the depreciation rate gradually increased from 2.50% to 4% over the period 1960-2001 according to the following formula:

$$\delta_t = \begin{cases} 2.50\% & \forall t < 1960 \\ 0.0250 \left[\left(\frac{0.04}{0.025} \right)^{\frac{1}{41}} \right]^{t-2001+41} & \forall t \geq 1960 \end{cases} \quad (9)$$

Figure 10 displays the estimates of net public capital stock, expressed in local currency unit at constant prices, for the alternative assumptions on the depreciation time profile. Logically, the net stocks evaluated with the constant depreciation rate of 4.00%

are always inferior to our benchmark estimates, but both dynamics are quite similar as we can observe on Figure 11 where the corresponding growth rates are displayed. This result is logical since our benchmark depreciation rates do not vary before 1980 and are only slightly decreasing after this date. Then, the corresponding dynamics of our estimates is quite similar to that obtained with a constant depreciation rate. The stocks evaluated with the depreciation rates used by Kamps (2004a) are also quite similar to our benchmark estimates at the early of the 1970s. Indeed, given the formula used by Kamps, the aggregated depreciation rate for OECD countries is equal to 2.80% in 1970, while our benchmark estimated depreciation rate at the same date is 2.71%. But in this case, the difference between both depreciation rates has increased over time. That is why the difference between the corresponding estimated stocks has also increased over time. In 2000, the difference between both estimated stocks reached 9.31% of the benchmark stock for Pakistan, 10.65% for Peru, 10.19% for Philippines and 9.85% for Tunisia. Given the potential sources of errors due to the perpetual inventory method in the valuation of the estimates of capital stocks, such a difference can be considered as negligible. Secondly, as mentioned above, the use of a geometric pattern is very general in the literature devoted to the net capital stock estimates, and not only for public capital stocks. Besides, Hulten and Wyckoff (1981) show that if different capital goods are lumped together, the geometric depreciation rate gives a reasonable statistical approximation of the true depreciation rate. For these reasons, we do not report the sensitivity analysis of our estimates to other methods of depreciation (straight-line, hyperbolic etc.). Kamps reports the results of this type of sensitivity analysis for his net public capital stock estimates for OECD countries. He shows that hyperbolic and geometric depreciation result in quite similar capital stock estimates whereas the estimates based on straight-line depreciation differ considerably in levels and also in dynamics.

Finally, we propose an evaluation of the robustness of our estimates to the choice of the initial condition. Naturally, the estimation of the initial capital stocks, which consist in accumulated past investments, presents substantial problems, since no information is available about public investments over long period of time, even for the OECD countries. In our study, the benchmark estimates are computed with an initial stock defined as the accumulation of a pseudo public investment series. This approach requires several assumptions: (1) an averaged growth rate for the pseudo investment series (2) an initial condition for the stock or equivalently a starting date for the pseudo series and (3) a depreciation rate over this period. As it was explained in the previous section, we consider an averaged growth rate of investments equal to 4.00% for all the countries of our sample, a depreciation rate equal to 2.71% and a starting date in 1880, *i.e.* twenty years after the initial date considered by Kamps for OECD countries. In order to determine the sensitivity of our estimates to these assumptions, we consider two alternative sets of assumptions. In the first set, we assume that the pseudo series starts in 1920. Consequently, this assumption implies a lower initial stock for all the countries of the panel. In the second set of assumptions, the starting date remains unchanged, but we consider a heterogeneous growth rate of investments to compute the pseudo investment series. For each country, the growth rate used is set equal to the historical growth observed over the period 1970-2000. Figures 12 and 13 display the

corresponding estimates of the net capital stocks and the growth rates of net capital stocks. For three reference countries (Pakistan, Philippines and Tunisia) the use of the national growth rate of public investment to build the pseudo series of past investments leads to an initial capital stock higher than the benchmark ones. In these cases, the difference between the two initial stocks expressed as percentage of the benchmark initial stock ranges from 20.9% for Philippines to -29.62% for Tunisia. However these important differences rapidly decrease with time. At the end of the sample, the difference between the estimates of capital stocks is 1.17% for Pakistan, 0.70% for Peru, 2.39% for Philippines and -2.41% for Tunisia. Besides, the dynamics of growth rates of capital stocks are quite similar under various assumptions concerning the time profile of depreciation rates.

These observations show that, at least for these reference countries, the dynamics of our benchmark PIM estimates of net public capital stocks are relatively robust to some changes in the time depreciation profile or in the value of the initial stocks. Moreover, it is obvious that if the public capital stocks in developing countries were overvalued, it would be due rather to a mis-measurement of the part of monetary investments which were really transformed in productive capital rather than due to a mis-measurement of the depreciation rates or of the initial stocks.

3 Public Investment and Efficiency

The main drawbacks of the PIM method are well known. The two largest are the fact that this estimation method requires a variety of assumptions concerning service lives and depreciation patterns and an evaluation of initial stock. Firstly, we have proposed a sensitivity analysis of our estimates to these assumptions, and secondly these drawbacks are not specific to the developing countries. For both reasons, the net capital stocks estimated by the PIM can be used to compare the productivity of public capital in developing countries and in OECD countries. However, there is another problem considered as more specific¹⁹ to developing countries: it is the efficiency of public investments in creating capital.

Indeed, Summers and Heston (1991), Pritchett (1996) or Canning (1998) state that the same investment flows in different countries may have very different effectiveness in actually producing capital, due to the differences in the efficiency of the public sector and differences in the price of capital. If the investment project is carried out by the public sector, actual and economic costs (defined as the minimum of possible costs given available technology) may deviate. So, monetary investment in infrastructure may be a very poor proxy of the amount of public capital actually produced. For instance, Pritchett suggests that in a typical developing country less than 50 cents of capital were created for each public dollar invested. He concludes that *"one of the deep difficulties of development may well be that even when public capital is productive it*

¹⁹We assert that this issue is specific to developing countries since only studies devoted to these countries evoked this problem. To the best of our knowledge, in the huge literature devoted to the public capital in the United States, there is no study that points out this fact. But, this is not a proof of the specificity that the inefficiency of public investments is specific in developing countries.

may be difficult to create this capital in the public sector” (Pritchett, 1996, page 1). Given this potential inefficiency of public investments, the use of monetary investment flows may introduce systematic errors in stock estimates. In particular, it implies that public capital stock series constructed with the PIM will tend to be overvalued.

In this section, we firstly intend to evaluate this inefficiency using an original methodology and secondly to estimate net stocks only based on the productive component of investments.

3.1 Public Investment Efficiency: a Non Parametric Approach

The idea that a dollar’s worth of public investment spending often does not create a dollar’s worth of capital can be expressed as follows:

$$K_{t+1} = (1 - \delta) K_t + f(I_t) \quad (10)$$

where K_t denotes the real public capital stock at time t and I denotes the corresponding gross public investment. The function $f(I_t)$ represents the efficiency of public investments to generate new capital. We assume that efficiency is constant over time, *i.e.* the function $f(.)$ does not vary with time. Since the relative efficiency may vary with the amount of investments, such an assumption is not very restrictive. The perpetual inventory method assumes that this function is always defined as the identity function:

$$f(I_t) = I_t \quad (11)$$

On the contrary if we assume that, according to Pritchett (1996), in a typical developing countries only a certain part of investments is used to create the public capital, the function $f(.)$ satisfies the following constraints:

$$0 \leq f(I_t) < I_t \quad (12)$$

$$f(0) = 0 \quad (13)$$

The fact that $f(I_t)$ is strictly inferior to I_t reflects the inefficiency of public investments in creating capital. The more different from zero is the distance $|f(I_t) - I_t|$, the less appropriate to estimate public capital stocks is the PIM method. If this efficiency function were known, it would be possible to estimate the ”productive” component of investments at each date and consequently to estimate the genuine net public capital stocks by the PIM, as presented in the previous section. It is important to note that it is not the PIM itself which is a problem for the developing countries. It is the fact that the PIM is based on the total monetary flows of gross investments which is problematic.

In this context, the main issue is that it is very difficult to find a functional form for this function $f(.)$. The simplest way would be to assume that productive investments are strictly proportional to the total investments. If, as it stated by Pritchett, less than 50 cents of capital were created for each public dollar invested, we would have:

$$f(I_t) = \alpha I_t \quad (14)$$

with $\alpha < 1/2$. The main drawback of this specification, is that we assume that the relative efficiency of public investments is constant in the amount of the investments. It implies that a huge spending going to white elephant has relatively the same efficiency (or inefficiency) as a little project of infrastructure for which the control can be stricter and more direct. Since no natural specification of the efficiency function $f(\cdot)$ can be justified *a priori*, another solution consists in estimating this function by a non parametric method for a country or for a sub-group of developing countries and in taking this estimate as a benchmark for all the countries of our sample. More precisely, the aim of our non parametric approach is not to evaluate the relative efficiency of public investments in the 26 countries of our panel, but to estimate the efficiency function for a sub-group of countries and to consider this estimated functional form (and not the corresponding efficiency) as benchmark for all the countries. For this purpose, three ingredients are required: (1) a series a public investments (2) the depreciation rates (or its time profile) and (3) a series of public capital net stocks effectively available in the reference countries. The last element is the most difficult to find. Indeed, in order to precisely estimate the public capital stock in developing countries, the efficiency function is required, and in order to estimate this function it is necessary to have the series of public capital.

In this study, we propose to estimate the efficiency function of the public investments using the physical measure of infrastructure as a proxy²⁰ of the public capital stock effectively used in the developing countries. Recently, in order to study the link between the public infrastructure spending and the physical infrastructure stocks, Calderon, Easterly and Serven (2004) used the same approximation²¹ for the Latin American countries. They used an ARDL specification with the sectoral monetary investments flows (for instance, the investments in the road sector) and the physical measures of the corresponding infrastructure, expressed as growth rate (for instance, the number of kilometers of paved road). Their regressions in panel models with or without fixed effects point out the statistical link between the past investment fluctuations and infrastructure level. ”*The conclusion from these empirical experiments is that infrastructure investment is a robust predictor of subsequent changes in the physical infrastructure stock across countries and over time*”. (Calderon, Easterly and Serven, page 62).

Here, our approach is different. Firstly, we do not intend to estimate a long term multiplier between the past investments and the variation of the physical infrastructure stocks in an ARDL specification. We intend to estimate the functional form $f(\cdot)$, which may be not linear, between the current monetary investments and the monetary variation of the current stock *i.e.* $K_{t+1} - (1 - \delta) K_t$. Secondly, our study is only devoted to the link between the public investments and the public capital. On the contrary Calderon, Easterly and Serven analyze simultaneously the total private investments,

²⁰This idea which consists to estimate the efficiency function by comparing the variations of the physical measures of the capital to the monetary investments flows has been evoked by Pritchett (footnote 31, page 36, Pritchett 1996), when he considered the first data collected by Canning and Fay (1995) on the physical measures of the transport infrastructure.

²¹Calderon, Easterly and Serven (2004), tables 2.6 and 2.7, starting from the page 61.

the private investments and the public investments. Consequently, in order to estimate the link between the public investments and the public capital using physical measures, it is required to consider countries (1) for which there are available data about sectoral public investments over a long enough period of time, and (2) for which the private investments in the reference sectors are negligible comparing to the public investments. To the best of our knowledge, only the Calderon, Easterly and Serven's database about nine countries of the Latin America allow an enough detailed decomposition of the public investments for a long period of time that allows us to establish a correspondence with the physical measures of the Canning's database. That is why we choose two reference LA countries from our panel, Colombia and Mexico. For these two countries we compare the investments flows to the physical measure variations over the period 1981-1995. We use a decomposition of investments in four sectors for which there exist corresponding physical measures in the Canning's database. These sectors are the following: electricity, telecommunication, roads and railways.

One of the problems of this decomposition is that it considers sectors for which private investments may be important. As in the majority of Latin America countries, in these two reference countries, the proportion private investments versus public of the investments in infrastructure deeply changed during the period 1981-1995. In order to avoid this problem, we consider only a period of time for which the part of private investments in the total investments is insignificant. More precisely, for each sector, the sample used for estimation starts in 1981 and ends at the dates reported in the Table 4. These ending dates have been chosen such that during the considered period of time, the amount of the private investments in the total investments of the specified sectors never exceeds 15%. So during these period, we can use the infrastructure as a proxy of the public capital for the considered sector. Generally, these dates correspond to the reform dates pointed out by Calderon, Easterly and Serven (2004).

The second problem concerning this sectoral decomposition is the correspondence between the investments categories and the infrastructure physical measures proposed by Canning. To measure the stock of infrastructure in the electricity sector we consider the electricity-generating capacity expressed in million of kilowatts. For the telecommunication sector, two types of measures can be used: the number of telephone lines or the number of telephone main lines. We decide to use the second measure, which was notably considered in the ARDL specification estimated by Calderon, Easterly and Serven (2004). Two measures are also possible for the roads sector: the number of road kilometers or the number of paved road kilometers. For this sector, we decide to use the measure which allows us to cover better the estimation period for each country. Thus, for Mexico we use the number of road kilometers while for Colombia we use the number of paved road kilometers. Finally, to measure the investments in the railways sector, the number of the rail kilometers was used.

Then, the problem consists in estimating the functional form of the public investments efficiency function. This function relates on the one hand the monetary flows of investments expressed in million US dollars and on the other hand the public capital stocks measured of in the same monetary unit. But, we have only physical measures of these stocks. Our methodology is then the following. Let us assume that at a certain

date t , for a sector $j = 1, \dots, N$, the capital stocks expressed in monetary units is defined by the following relation:

$$K_{jt} = v_{jt} X_{jt} \quad (15)$$

where X_{jt} denotes the physical measure of the capital in to the sector j and v_{jt} represents the monetary value of one physical unit of fixed capital. For instance, if we consider the road sector, X_{jt} represents the total number of road kilometers effectively created at the date t and v_{jt} represent the monetary value of one kilometer of road calculated at the date t , expressed in the same monetary unit as the corresponding investments. The parameter δ_j represents the depreciation rate of the assets of the j^{th} sector. For the four reference sectors, we consider the depreciation rate computed in the previous section (see Tables 2 and 4). We note $\tilde{K}_{j,t+1}$ the net increase of the capital stock:

$$\tilde{\Delta}K_{j,t+1} = K_{j,t+1} - (1 - \delta_j) K_{jt} \quad (16)$$

We assume that the efficiency function of the public investments is specific to each sector: $f_j(\cdot)$ denotes represents the efficiency function associated to the j^{th} sector. Our objective is to estimate the functions $f_j(\cdot)$ defined as:

$$\tilde{\Delta}K_{j,t+1} = f_j(\beta_{jt} I_{jt}) \quad j = 1, \dots, N \quad (17)$$

where I_{jt} represents the public investments in the sector j and β_j , with $0 \leq \beta_{jt} \leq 1$, denotes the specific part of these sectoral investments which actually correspond to the assets considered in the Canning's database. For instance, if we consider the electricity sector, we can state that a part of the investments in this sector is allocated for something else than the increase of the electricity generating capacity (security investments, investments made to preserve the natural environment, for instance). This part of public investments does not correspond to unproductive investments. The parameters β_j only measures the inadequacy between our sectoral decomposition of investments and the physical asset considered in the Canning database. If the function $f_j(\cdot)$ is homogenous of degree λ , then it can be rewritten in the following way:

$$\tilde{v}_{j,t+1} X_{j,t+1} - (1 - \delta_j) \tilde{v}_{j,t} X_{j,t} = f_j(I_{jt}) \quad (18)$$

$$\tilde{v}_{j,t} = \frac{v_{j,t}}{\beta_{jt}^\lambda} \quad (19)$$

Except the function $f_j(\cdot)$, only the valuations $v_{j,t}$ and the proportions β_j are unknown. In order to evaluate them, one of the possible solutions is to use the results of previous studies devoted to the monetary cost of one road kilometer, of one rail kilometer, etc. But, there are no available data concerning the long term evolution of these costs. Canning and Fay (1995) or Canning and Bennathan (2000) provide some evaluations of these costs for developing countries, but their data are available only for one baseline year. Moreover, even if we have these information, it is impossible to identify the parameters $\tilde{v}_{j,t}$ if the proportions β_j are unknown.

For these reasons, we consider the following methodology. We estimate a sequence of values of $\tilde{v}_{j,t}$ in order to get a situation as close as possible to the full efficiency situation, *i.e.* to the PIM for which one invested dollar increases the capital of exactly one dollar.

Thus, we will consider the valuations of stocks which are the more favorable to the public investments efficiency. Consequently, we mainly take the risk to over-evaluate this efficiency. More precisely, we know that, if PIM is exact, the function $f_j(\cdot)$ is defined by $f_j(z) = z$. Then, the corresponding sequence of values $\tilde{v}_{j,t}$ is defined by:

$$\tilde{\Delta}K_{j,t+1} = \tilde{v}_{j,t+1}X_{j,t+1} - (1 - \delta_j)\tilde{v}_{j,t}X_{j,t} = I_{jt} \quad (20)$$

We assume that $\tilde{v}_{j,t}$ has a geometric evolution:

$$\tilde{v}_{j,t} = v (1 + \gamma)^t \quad (21)$$

This hypothesis allows us to take into account the inflation of the costs associated to the construction of one physical infrastructure unit. So, we try to determine the parameters (v, γ) , which, in the presence of the historical observations X_{jt} and I_{jt} , will give us the valuation dynamics $\tilde{v}_{j,t}$ compatible with the PIM. For that, we solve the following program:

$$(\hat{v}, \hat{\gamma}) = \underset{\{v, \gamma\} \in \mathbb{R}^{+2}}{\text{ArgMin}} \frac{1}{T} \sum_{t=1}^T \left[v (1 + \gamma)^{t+1} X_{j,t+1} - (1 - \delta_j) v (1 + \gamma)^t X_{j,t} - I_{jt} \right]^2 \quad (22)$$

under the constraints:

$$v (1 + \gamma)^t [(1 + \gamma) X_{j,t+1} - (1 - \delta_j) X_{j,t}] \leq I_{jt} \quad \forall t = 1, \dots, T \quad (23)$$

These T constraints impose that, for all the considered dates, the monetary increases of stocks, taking into account the depreciation, cannot be more important than the investments. We exclude the case when the investments are “more” efficient than those considered in the PIM, which means the case when one invested dollar produces a capital of more than one dollar. Using the estimated parameters \hat{v} and $\hat{\gamma}$, we can recreate a sequence of estimated values for $\tilde{v}_{j,t}$. These coefficients allow us to approximate the increase of stocks according the formula:

$$\tilde{\Delta}\hat{K}_{j,t+1} = \hat{v} (1 + \hat{\gamma})^{t+1} X_{j,t+1} - (1 - \delta_j)\hat{v} (1 + \hat{\gamma})^t X_{j,t} \quad (24)$$

Under our assumption, this stock variation is the closest to the variation implied by the PIM, *i.e.* $\tilde{K}_{j,t+1} = I_{jt}$. Using the sequence of T realizations of $\tilde{K}_{j,t+1}$ and the T corresponding values observed for I_{jt} , we can report all the couples of points as on the example of the Figure 14 and, after this step, we can estimate the efficiency curve.

$$\tilde{K}_{j,t+1} = \hat{f}_j(I_{jt}) \quad (25)$$

For a specified level of investments I_{jt} , the more the value of $\hat{f}_j(I_{jt})$ is far from $\tilde{K}_{j,t+1} = I_{jt}$, the less appropriate is the estimation of the capital stocks by the PIM using the total flows of investments. On the other hand, if the estimated function $\hat{f}_j(I_{jt})$ coincides with the straight line of 45° slope, then the PIM is a good method to approximate the stocks. So, our approach allows to evaluate the form of the efficiency function and, also, to determine if the relative efficiency (*i.e.* the ratio of the productive investments in the total investments) is constant or decreases with the investments level.

For each reference sector, the efficiency function is estimated using a local LOESS regression (Cleveland and Devlin, 1988). The principle of this regression is that a local polynomial is estimated for every reference point, using the points situated in the neighborhood of this reference point. The dimension of these neighborhoods is determined by a smoothing parameter which is defined by the rapport between the number of points included in the neighborhood and the total number of observations. If the smoothing parameter is equal to 1, then all the points of the sample are used to compute the polynomial parameters and, consequently, we determine a linear adjustment line. The less the value of this parameter, the more volatile the estimated function²². In this study, the smoothing parameter was chosen according to a modified AIC criterion firstly proposed by Hurvich and Simonoff (1998).

In order to assess the quality of our approach, we propose to estimate the efficiency function of the public investments in road and highways for the United States over the period 1950-1992. We use the series of public investments (Federal, State and Local) in road and highways, valued at historical costs expressed in million of US dollars. These series are taken from the BEA²³. For the corresponding physical measures, we consider the total road kilometers (Canning, 1998). Figure 15 displays the estimated efficiency function and the corresponding 95% confidence interval. The values of the smoothing parameter and other statistics of the regression are reported in Table 5. We can observe that the estimated function is relatively close to the straight line of 45° slope. For a low level of investments, the estimated efficiency function is statistically not different to the identity function. Consequently, for the United States, our approach does not show an important discrepancy between investments and the value of the capital stocks. The PIM based on total investments provides a good proxy of the public capital stocks effectively available.

When the same methodology is applied for the case of our two reference developing countries, the results are very different. Figure 16 displays the estimated efficiency functions for the sector of electricity, road and telecoms in Colombia. Undoubtedly, these estimated functions are largely below the straight line of 45° slope. It appears that the sector where the public investments are the more efficient is the telecommunication sector. However, these comparative results must be very carefully used. Given the data availability and the necessity to end the sample before the dates of reform, our sectoral samples are very reduced: 1980-1993 for the power sector, 1980-1994 for the telecommunication sector and 1980-1991 for roads. The short length of our samples implies that the estimates of the sectoral efficiency functions are relatively imprecise. In order to obtain more precise estimates, we propose an estimate of the global efficiency function based on the data of the three sectors. More precisely, we report all the couples $(\tilde{K}_{j,t+1}, I_{jt})$ obtained for the sectors $j = 1, 2$ and 3 . Given these 37 couples, we estimate the global efficiency function $f(\cdot)$ by a LOESS regression.

$$\tilde{K}_{j,t+1} = f(I_{jt}) \quad j = 1, 2, 3 \quad (26)$$

²²See Yatchew (2003) for more details about non parametric estimations.

²³Fixed and Reproducible tangible Wealth, 1999, Code: EYBGAIT08.

Figure 17 displays the estimated efficiency function for Colombia and Figure 18 displays the same function for Mexico. Both estimated functions are strikingly similar. They show that the "productive" component of public investments is largely overvalued when the PIM is used. Two results are particularly interesting here. Firstly, the estimated function is near a straight line. The optimal smoothing parameter according to the modified AIC criteria is equal to 1 for both countries (see Table 5). This conclusion is robust to the choice of another information criterion as the general cross validation (GCV) function. This result implies that the estimated function can be approximated by a simple linear functional form, *i.e.* $f(I_t) = \alpha I_t$ where α , with $0 < \alpha < 1$, denotes an efficiency parameter according to the expression proposed by Pritchett (1996). In other words, the relative efficiency, defined as the ratio of the "productive" investments to the total amount of investments, is constant. Secondly, the coefficient of the linear regression of $\tilde{K}_{j,t+1}$ to I_{jt} is equal to 0.38 in the case of Colombia and 0.40 in the case of Mexico. According to this evaluation, one peso of public investments creates around 0.40 pesos of public capital in our reference sectors. We need to emphasize that this evaluation is based on artificial data, *i.e.* $\tilde{K}_{j,t+1}$, built so as to minimize the distance between it and the PIM reference. Our conclusions based on these non parametric estimates are similar to that of Pritchett who found that "*a variety of calculations suggest that in a typical developing country less than 50 cents of capital were created for each public dollar invested*".

3.2 Net Capital Stock Estimates based on the Efficiency Function

We now propose to estimate new series of net capital stocks only based on the productive component of public investments. For that, we assume that the results obtained for our two reference countries in the previous section can be generalized to all the developing countries of our panel. More precisely, we only assume that the linear form of the efficiency function can be used as a benchmark for all our countries. This assumption does not imply that the public investments in the 26 developing countries have the same efficiency in creating capital. It only implies that the relative efficiency is constant for all the countries. If we note K_{it} the net stock for the i^{th} country, $i = 1, ..N$ and I_{it} the corresponding public investment, we assume that:

$$K_{i,t+1} = (1 - \delta_t) K_{it} + \alpha_i I_{it} \quad (27)$$

where parameters α_i satisfy $0 \leq \alpha_i < 1$. The depreciation rates δ_t are identical to those estimated in the first section (see Table A3, Appendix B.2). As in the case of our benchmark PIM estimates, the initial stocks are derived from cumulated artificial investment series. For each country, the investment series starts in 1880, increases by 4 percent a year and finally reaches its observed level at the first date of our sample. Logically, this observed level is defined by the product $\alpha_i I_{i1}$. Consequently, the choice of the efficiency parameter α_i affects the initial stock too.

The national efficiency parameters cannot be estimated for all the countries of our panel. As it was mentioned in the previous section, a non parametric or even a parametric estimate of the efficiency function requires long series of sectoral investments.

To the best of our knowledge, such information is not available for almost all the countries of the panel. Moreover, it would be naive to believe that it is possible to evaluate the relative efficiency of the public sector in the developing countries using only such an aggregated approach. Many other factors have to be taken into account. For these reasons, we prefer to propose a sensitivity analysis of the estimates of the productivity of public capital stocks based on various values of the efficiency parameter. We will consider 3 cases: a case of low efficiency with $\alpha_i = 0.2$, a case of medium efficiency $\alpha_i = 0.4$ and a case of high efficiency $\alpha_i = 0.6$. For each country, these three cases are considered and three corresponding estimates of the net public capital stocks are computed. Figure 19 displays the evolution of the corresponding ratios of the public net capital stocks to GDP for the 26 countries of our panel.

4 Conclusion

In this paper, we provide various estimates of the government net capital stocks for 26 developing countries over the period 1970-2001. The use of the public capital stock concept instead of the use of the concept of infrastructure allows comparing our estimates to those generally done for OECD countries and in particular for the United States. Besides, our series of public capital stocks are homogeneous and comparable: they are estimated according to the same methodology and they are based on the same definition of public investments. To our knowledge, this is the first attempt to propose such comparable series of public capital for developing countries. These internationally comparable annual estimated stocks would constitute a complementary solution to the use of public investment flows and to the use of physical measures of infrastructure when one comes to evaluate the productivity of the public capital formation in developing countries. It may not be the best solution and each approach has its drawbacks and its advantages. The use of investment flows implies that the effects of public investment on growth or private factors productivity are independent of the level of the corresponding stocks. On the contrary, the use of stocks instead of investments flows necessarily increases the potential measurement errors. Finally, the use of physical measures has the advantage to precisely measure the stock of infrastructure really available in the economy. However, it does not allow taking into account the quality of infrastructure. Besides the list of productive infrastructures considered is largely dependent to the data availability and may exclude some important components of public investments (educational building etc.) considered as productive in other studies and covered by the notion of public capital stocks.

If the usefulness of public capital stock series for developing countries is obvious, as it is the case for OECD countries (Kamps, 2004), the methodology used to estimate these series must be adapted. It is recognized that in a typical developing country, an important part of public investment is inefficient in creating capital. Consequently, the perpetual inventory method, when it is based on the totality of monetary investment flows, may overvalue the public stocks. In this paper, we propose to assess this inefficiency of public investment in creating public capital by direct comparison of physical measures of infrastructure available to the monetary investment flows. With a non

parametric approach, we show that in two LA countries the relative inefficiency, i.e. the ratio of "productive" investments to the total investments, is constant. It would be naive to hope to estimate the relative efficiency of public investments for the 26 countries of our panel given the data availability. However, our partial conclusion on the functional form of the efficiency of public investment in LA countries may be used for all other countries in order to make a sensitivity analysis of our stock estimates. More precisely, we propose various estimates of stocks based on various assumptions of the efficiency parameter. Given the lack of precision of the estimates of the relative efficiency of public investments, one must be very careful with our corresponding estimated levels of stocks. However, these series can be used as inputs in order to test the sensibility of various measures or policy analysis (on the impact of public capital stocks on growth, poverty indices, etc.) to the efficiency of public investment in creating capital.

A References

- ASCHAUER D.A. (1989a), "Is Public Expenditure Productive?", *Journal of Monetary Economics* 23, pp. 177-200.
- ASCHAUER D.A. (1989b), "Does Public Capital Crowd Out Private Capital?", *Journal of Monetary Economics* 24(2), pp. 171-188.
- BACKUS, D.K. AND KEHOE, P. (1992), "International Evidence on the Historical Properties of Business Cycles", *American Economic Review*, 82, 4, pp. 864-888.
- BERNDT E.R. AND HANSSON B. (1992), "Measuring the Contribution of Public Infrastructure Capital in Sweden", *Scandinavian Journal of Economics*, 94, pp. 151-168.
- BUREAU OF ECONOMIC ANALYSIS (1999), *Fixed Reproducible Tangible Wealth in the United States, 1925-1994*, Washington, U.S. Department of Commerce.
- BUREAU OF ECONOMIC ANALYSIS (2003), *Fixed Assets and Consumer Durable Goods in the United States, 1925-1997*, Washington, U.S. Department of Commerce.
- CAIN L.P. (1997), "Historical Perspective on Infrastructure and US Economic Development", *Regional Science and Urban Economics*, 27, pp. 117-138
- CALDERON, C., EASTERLY, W. AND SERVEN, L. (2004), "Latin America's Infrastructure in the Era of Macroeconomic Crises", in *The Limits of Stabilization*, Easterly W. and Serven L. eds., The World Bank.
- CANNING D. (1998), "A Database of World Infrastructure Stocks, 1950-1995", *The World Bank Economic Review*, 12, 529-547.
- CANNING D. (1999), "Infrastructure's Contribution to Aggregate Output", *World Bank Policy Research Working Paper*, 2246, Washington D.C.
- CANNING, D. AND BENNATHAN, E. (2000), "The Social Rate of Return on Infrastructure Investments", *Mimeo*, World Bank.
- CANNING, D. AND PEDRONI, P (1999), "Infrastructure and Long-Run Economic Growth", *CAER II Discussion Paper 57*, Harvard Institute for International Development.
- CLEVELAND, W. AND DEVLIN, S. (1988), "Locally Weighted Regression: An Approach to Regression Analysis by Local Fitting", *Journal of American Statistical Association*, 83, pp. 596-610.
- DECLERCQ C. (1994), "Evaluation du Capital Public Français : 1950-1991. Méthodologie et Construction de la Série", *Document de travail ERASME*.
- DEVARAJAN S., SWAROOP V. AND ZOU H.F. (1996), "The Composition of Public Expenditure and Economic Growth", *Journal of Monetary Economics*, 37(1), pp. 313-344.
- EASTERLY W. AND SERVEN L. (2004), *The Limits of Stabilization*, The World Bank.
- EVANS P. AND KARRAS G. (1994), "Is Government Capital Productive? Evidence from a Panel of Seven Countries", *Journal of Macroeconomics*, 16(2), pp. 271-279.

- FERNALD J.G. (1999), "Roads to Prosperity? Assessing the Link Between Public Capital and Productivity", *The American Economic Review*, 89(3), pp. 619-638
- FORD R. AND PORET P. (1991), "Infrastructure and Private-Sector Productivity", *OECD Economic Studies*, vol. 0, 17, pp. 63-89.
- GARCIA-MILA T., MCGUIRE T.J. AND PORTER R.H. (1996), "The Effect of Public Capital in State Level Production Functions Reconsidered", *The Review of Economics and Statistics*, 78, pp. 177-179.
- GRAMLICH E.M. (1994), "Infrastructure Investment: a Review Essay", *Journal of Economic Literature*, 32, pp. 1176-1196.
- HODRICK, R.J. AND PRESCOTT C.E. (1980), "Postwar U.S. Business Cycles: an Empirical Investigation", *Discussion Paper 451*, Carnegie Mellon University.
- HOLTZ-EAKIN D. (1994), "Public-Sector Capital and the Productivity Puzzle", *The Review of Economics and Statistics*, 76, pp. 12-21.
- HOLZL W. AND LEISH R. (2004), "Estimates of Capital Stocks and Capital Productivity in Austrian Manufacturing Industries, 1978-1994", *Working Paper*, Vienna University of Economics and Business Administration.
- HULTEN C.R. AND PETERSON G.E. (1984), "The Public Capital Stock: Needs, Trends, and Performance", *The American Economic Review*, 74(2), pp. 166-73.
- HULTEN C.R. AND SCHWAB R.M. (1997), "A Fiscal Federalism Approach to Infrastructure Policy", *Regional Science and Urban Economics*, 27, pp. 139-159
- HULTEN, C.R. AND WYKOFF, F.C. (1979), "Tax and Economic Depreciation of Machinery and Equipment: A Theoretical Appraisal", in *Economic Depreciation of the U.S. Capital Stock: A First Step*, Washington,DC: U.S. Department of the Treasury, Office of Tax Analysis.
- HULTEN, C.R. AND WYKOFF, F.C. (1981), "The Estimation of Economic Depreciation Using Vintage Asset Prices", *Journal of Econometrics*, 15, pp. 367-396.
- HURLIN C. (2000), *La Contribution Productive des Infrastructures Publiques. Analyses Positives et Normatives*, Phd Dissertation, University of Paris I Panthéon Sorbonne.
- HURVICH, C. M., AND SIMONOFF, J. S. (1998), "Smoothing Parameter Selection in Nonparametric Regression Using an Improved Akaike Information Criterion" *Journal of the Royal Statistical Society B*, 60, pp. 271 -293.
- JACOB, V., SHARMA, S.C. AND GRABOWSKI, R., (1997), "Capital Stock Estimates for Major Sectors and Disaggregated Manufacturing in Selected OECD Countries", *Applied Economics*, 29, pp. 563-579.
- KAMPS C. (2004a), "New Estimates of Government Net Capital Stocks for 22 OECD Countries, 1960-2001", *IMF Working Paper* 04/07.
- KAMPS C. (2004b), *The Dynamic Macroeconomic Effects of Public Capital: Theory and Evidence for OECD Countries*, Springer.
- LYNDE C. AND RICHMOND J. (1992), "The Role of Public Capital in Production", *The Review of Economics and Statistics*, 74, pp. 37-44

- MADDISON A. (1995), "Standardized Estimates of Fixed Capital Stock: A Six Country Comparison", in *Explaining the Economic Performance of Nations*, ed. Maddison, Edwaerd Elgar.
- MUNNELL A.H. (1990a), "Why has Productivity Declined? Productivity and Public Investment", *New England Economic Review*, F.R.B. of Boston, pp. 3-22.
- MUNNELL A.H. (1990b), "How Does Public Infrastructure Affect Regional Economic Performance?", *New England Economic Review*, 11-32.
- MORRISON C.J. AND SCHWARTZ A.E. (1996a), "State Infrastructure and Productive Performance", *The American Economic Review*, 86, pp. 1095-1111.
- NADIRI M.I. AND MAMUNEAS T.P. (1994), "The Effects of Public Infrastructure and R&D Capital on the Cost Structure and Performance of US Manufacturing Industries", *Review of Economics and Statistics*, 76, pp. 22-37.
- OECD (2001a), *Measuring Capital: OECD Manual*, OECD, Paris
- OECD (2001b), *Measuring Productivity: OECD Manual*, OECD, Paris
- OTTO G.D. AND VOSS G.M. (1998), "Is Public Capital Provision Efficient?", *Journal of Monetary Economics*, 42, pp. 47-66.
- PRITCHETT, L. (1996), "Mind your P's and Q's. The cost of Public Investment is Not the Value of Public Capital", *Policy Research Working Paper 1660*, The World Bank.
- RAM R. AND RAMSEY D. (1989), "Government Capital and Private Output in the United States", *Economic Letters*, 13, pp. 223-226.
- RAVN M.O. AND ULHIG H. (2002), "On Adjusting the HP-Filter for the Frequency of Observations", *Review of Economics and Statistics*, 84, 2, pp. 371-376.
- ROMP, W. AND DE HAAN, J. (2005), "Public Capital and Economic Growth: A critical Survey", *Mimeo* University of Groningen.
- SHAH A. (1992), "Dynamics of Public Infrastructure: Industrial Productivity and Profitability", *The Review of Economics and Statistics*, 74, pp. 28-36.
- STURM J.E. (1998), *Public Capital Expenditure in OECD Countries: the Causes and Impact of the Decline in Public Capital Spending*, Edward Elgar.
- STURM J.E. AND DE HAAN J. (1995), "Is Public Expenditure Really Productive?", *Economic Modelling*, 12, pp. 60-72.
- STURM J.E. AND DE HAAN J. (1998), "Public Capital Spending in the Netherlands: Developments and Explanations", *Applied Economics Letters*, 5, 5-10
- STURM J.E., KUPER G.H. AND DE HAAN J. (1996), "Modelling Government Investment and Economic Growth on a Macro Level: A Review", *CCSO Series*, 29.
- YATCHEW A. (2003), *SemiParametric Regression or the Applied Econometrician*, Cambridge University Press.
- WORLD BANK (1994), *Annual Report*, Washington DC.
- WORLD DEVELOPMENT INDICATORS (2004), *World Bank*, Washington DC.

Table 1. BEA Depreciation Rates by Assets

| Categories | Type | BEA assets | Depr. Rate | Service Life |
|--------------------|------------|----------------------------|------------|--------------|
| <i>Road</i> | Structures | Highways and Street | 0.0202 | 45 |
| <i>Railways</i> | Equipment | Railroad equipment | 0.0589 | 28 |
| | Structures | Railroad replacement track | 0.0275 | 38 |
| | Structures | Other railroad structures | 0.0166 | 54 |
| <i>Electricity</i> | Equipment | Electrical distribution | 0.0500 | 33 |
| | Equipment | Other electrical equipment | 0.1834 | 9 |
| | Structures | Electric light and power | 0.0211 | 40 |
| <i>Gas</i> | Structures | Gas | 0.0237 | 40 |
| <i>Water</i> | Structures | Water systems | 0.0152 | 60 |
| | Structures | Sewer systems | 0.0152 | 60 |
| <i>Telecoms</i> | Equipment | Other equipment | 0.1375 | 12 |
| | Structures | Telecommunications | 0.0237 | 40 |

Notes: The service lifetime is expressed in years. Structures and equipments correspond to non residential structures and equipments . Bureau of Economic Analysis (2003), table C, page M-31.

Table 2. Depreciation Rates by Categories

| Categories | Equipment | Structures | Depr. Rate |
|--------------------|-----------|------------|------------|
| <i>Road</i> | — | 0.0202 | 0.0202 |
| <i>Railways</i> | 0.0589 | 0.0275 | 0.0328 |
| <i>Electricity</i> | 0.050 | 0.0211 | 0.0260 |
| <i>Gas</i> | — | 0.0237 | 0.0237 |
| <i>Water</i> | — | 0.0152 | 0.0152 |
| <i>Telecoms</i> | 0.1375 | 0.0237 | 0.0429 |

Note: For each asset, the depreciation rate is defined as a weighted average of the corresponding rates used for equipments and structures by the BEA (Bureau of Economic Analysis, 2003, table C, page M-31).

Table 3. Government Net Capital Stocks in 26 Developing Countries
(As percentage of GDP, Constant Price)

| | 1975 | | 1980 | | 1990 | | 1995 | |
|------------------------|--------|------|--------|------|--------|------|--------|------|
| | Ratio | Rank | Ratio | Rank | Ratio | Rank | Ratio | Rank |
| Botswana | 62.6 | 9 | 66.5 | 11 | 54.7 | 17 | 67.2 | 9 |
| Burkina Faso | 14.3 | 24 | 16.3 | 26 | 23.7 | 25 | — | — |
| Cameroon | 67.5 | 8 | 63.4 | 13 | 103.4 | 3 | 114.7 | 2 |
| Colombia | 69.7 | 6 | 61.5 | 14 | 54.2 | 18 | 51.2 | 17 |
| Costa Rica | 59.6 | 13 | 59.2 | 15 | 63.7 | 9 | 52.4 | 15 |
| Dominican Republic | 94.9 | 1 | 90.5 | 3 | 94.7 | 5 | 96.2 | 4 |
| Fiji | 74.7 | 5 | 80.1 | 7 | 93.0 | 6 | 86.6 | 6 |
| Ghana | 59.6 | 12 | 70.3 | 8 | 57.8 | 15 | — | — |
| India | 20.1 | 23 | 21.3 | 25 | 22.3 | 26 | 22.2 | 24 |
| Indonesia | 80.4 | 3 | 82.0 | 4 | 96.1 | 4 | 88.7 | 5 |
| Kenya | 69.4 | 7 | 64.5 | 12 | 63.7 | 10 | 68.8 | 8 |
| Malaysia | 52.6 | 16 | 48.8 | 17 | 61.0 | 12 | 53.3 | 14 |
| Mauritius | — | — | 69.1 | 10 | 54.8 | 16 | 55.4 | 12 |
| Mexico | 47.9 | 18 | 44.8 | 19 | 58.0 | 14 | 57.9 | 11 |
| Morocco | 79.5 | 4 | 117.6 | 1 | 119.3 | 1 | 132.2 | 1 |
| Pakistan | 51.1 | 17 | 46.7 | 18 | 40.1 | 19 | 43.6 | 18 |
| Panama | 87.4 | 2 | 94.6 | 2 | 86.7 | 8 | 65.7 | 10 |
| Paraguay | 28.1 | 19 | 24.6 | 23 | 26.8 | 24 | 28.8 | 23 |
| Peru | 27.1 | 20 | 37.5 | 20 | 62.6 | 11 | 52.0 | 16 |
| Philippines | 24.5 | 21 | 25.2 | 22 | 36.0 | 21 | 42.1 | 19 |
| Thailand | 61.0 | 11 | 51.5 | 16 | 37.1 | 20 | 36.5 | 21 |
| Tunisia | 62.3 | 10 | 80.7 | 6 | 115.3 | 2 | 113.1 | 3 |
| Turkey | 56.9 | 15 | 69.4 | 9 | 59.2 | 13 | 55.3 | 13 |
| Uruguay | 21.0 | 22 | 24.0 | 24 | 33.2 | 22 | 31.8 | 22 |
| Venezuela, RB | 59.5 | 14 | 81.1 | 5 | 92.0 | 7 | 82.1 | 7 |
| Zimbabwe | — | — | 32.1 | 21 | 32.3 | 23 | 41.8 | 20 |
| Average | 55.5 | | 58.6 | | 63.1 | | 64.2 | |
| | (22.4) | | (25.7) | | (28.6) | | (28.7) | |
| Average (19 Countries) | 55.4 | | 59.2 | | 64.3 | | 61.8 | |
| | (22.7) | | (27.1) | | (29.1) | | (29.1) | |

Note: The standard deviations of the 26 (or 19 for the balanced panel) individual ratios are in parenthesis.

Table 4. The Ending Dates of the Sample and the Depreciation Rates

| | Electricity | Telecom | Roads | Rails |
|--------------------------------|-------------|---------|-------------|-------|
| <i>Depreciation Rate</i> | | | | |
| Rate | 2.60% | 4.29% | 2.02% | 3.28% |
| <i>Ending Dates of Samples</i> | | | | |
| Colombia | 1993 | 1994 | 1994 (1990) | — |
| Mexico | 1998 (1995) | 1990 | — | 1989 |

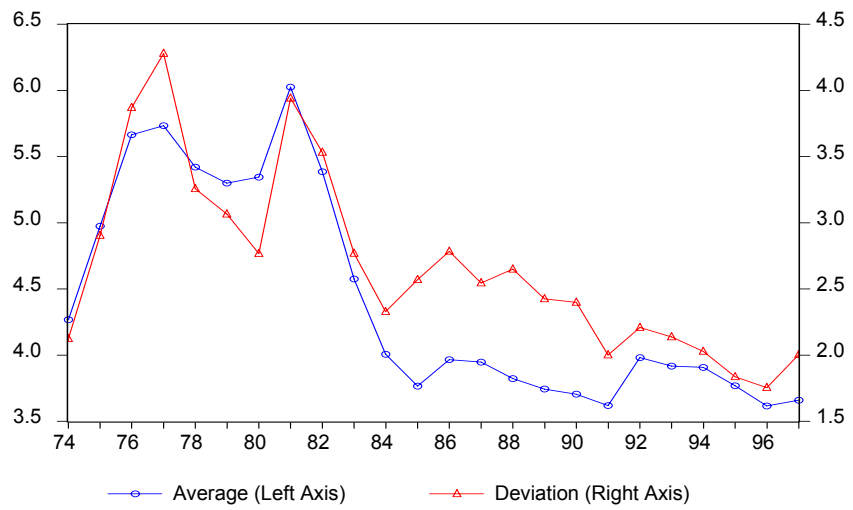
Note: For the case of the road sector in Colombia, the available data end in 1990. For the case of Mexico, in the electricity sector, the Canning's data end in 1995. Data concerning the public investments in Colombia for the railways sector are not available. The data concerning the road infrastructures for the Mexico before the data of reform (1989) are also not available.

Table 5. Loess Regressions

| Fit Summary | Colombia | Mexico | United States |
|------------------------------|----------|--------|---------------|
| Number of Observations | 37 | 35 | 42 |
| Smoothing Parameter | 1 | 1 | 0.63 |
| AICC | 11.95 | 12.49 | 17.46 |
| Degree of Local Polynomials | 1 | 1 | 1 |
| Points in Local Neighborhood | 37 | 35 | 26 |
| Residual Standard Error | 221.70 | 290.82 | 3468.58 |

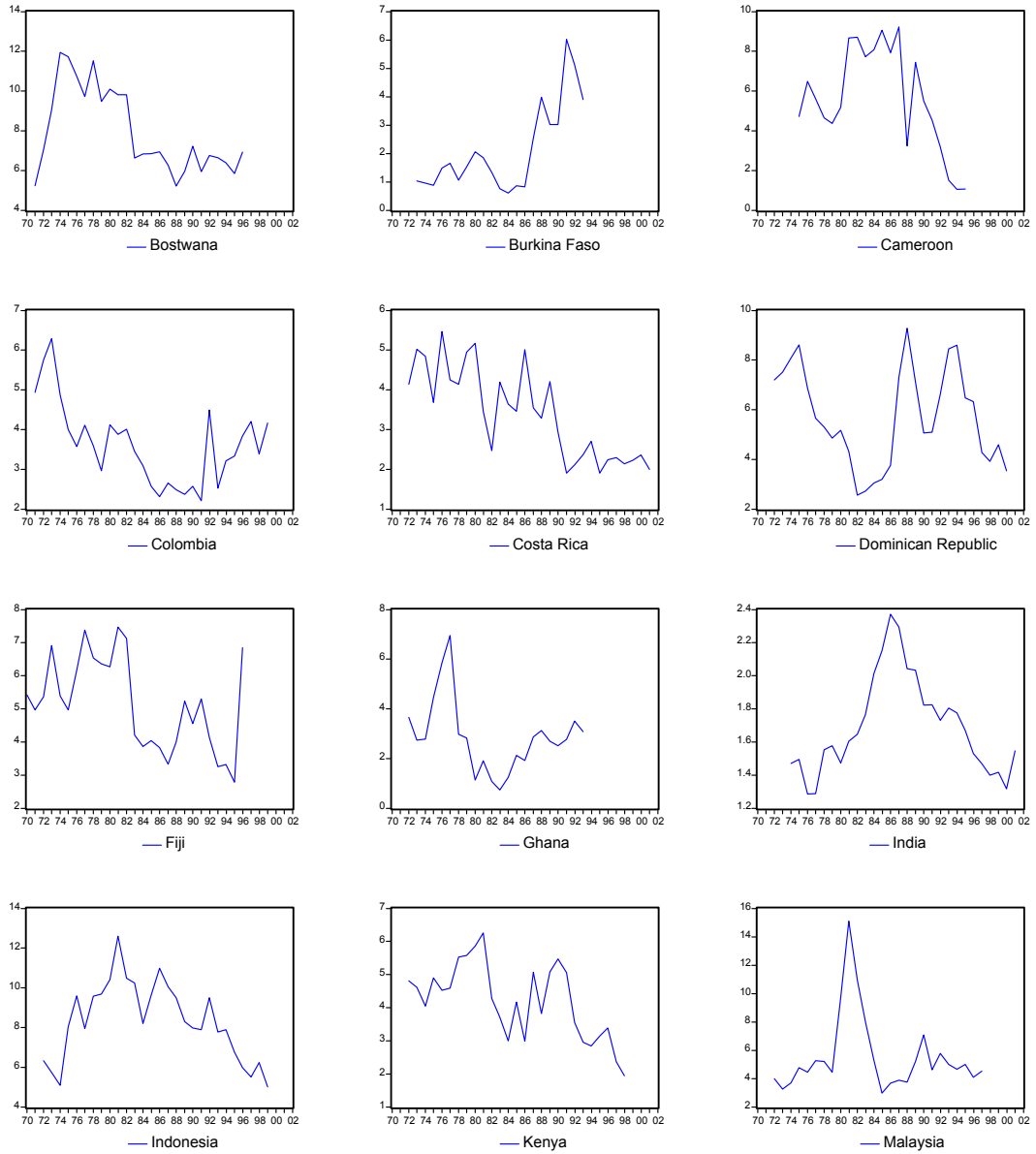
Notes. The AICC corresponds to the corrected AIC criterion proposed by Hurvich and Simonoff (1998). The optimal value of the smoothing parameter is chosen to optimize this criterion.

Figure 1. Ratios of Government Capital Expenditure to GDP, 1973-1997
 19 Developing Countries, Average and Standard Deviation (In Percentage)



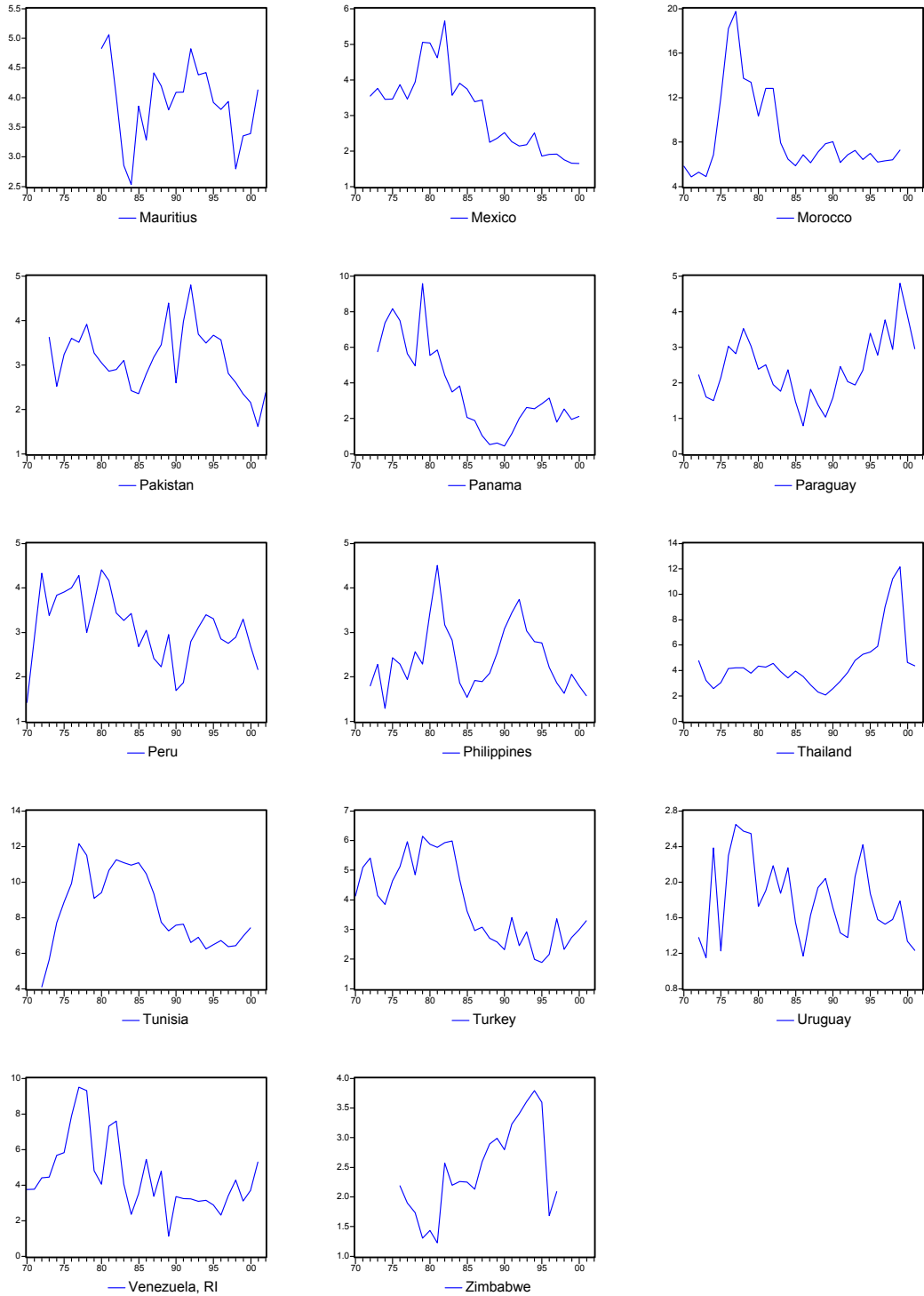
Source: The series are issued from the World Development Indicators (2004)

Figure 2. Ratios of Government Capital Expenditure to GDP
in 26 Developing Countries (As a percentage of GDP)



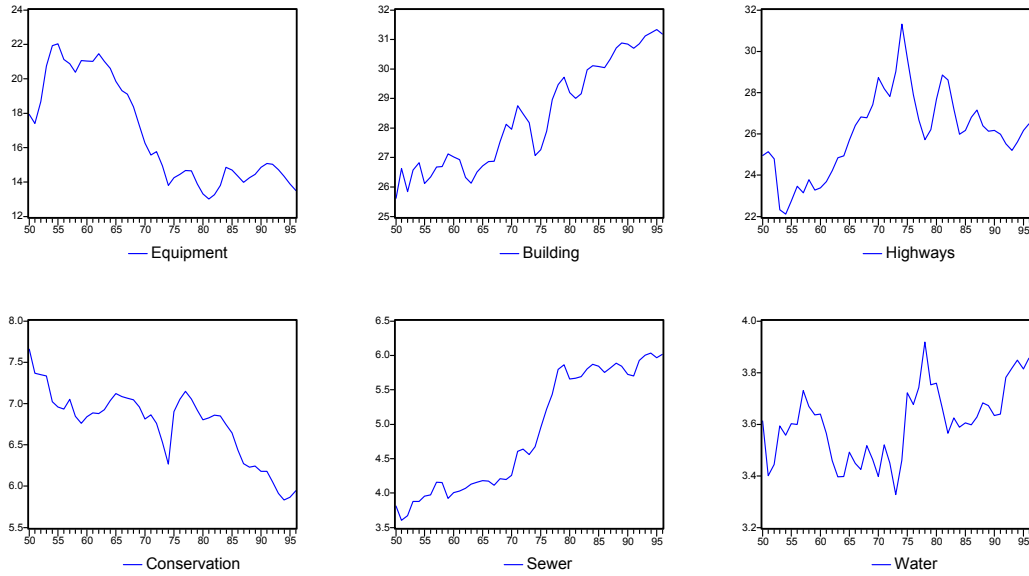
Source: World Development Indicators (2004)

Figure 2. (continued) Ratios of Government Capital Expenditure to GDP in 26 Developing Countries (As a percentage of GDP).



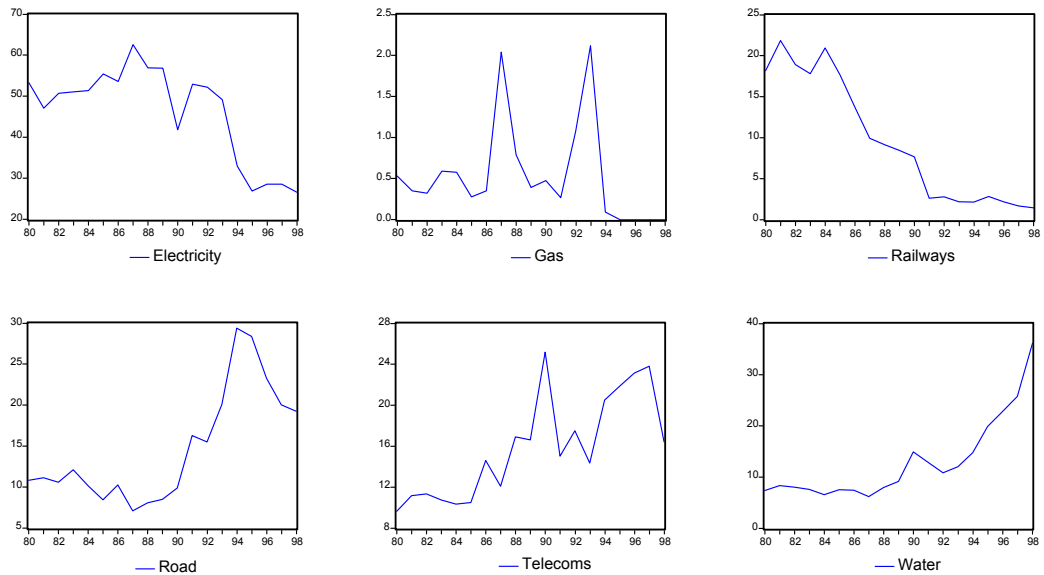
Source: World Development Indicators (2004)

Figure 3. Composition of the Total Government Net Capital Stocks.
United States, 1950-1996. (As percentage of Total Stock).



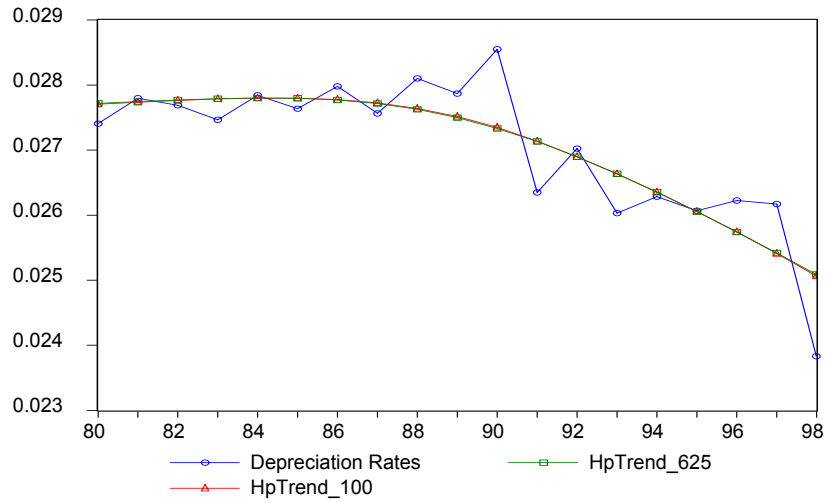
Sources: Series are issued from Fixed Reproducible Tangible Wealth, U.S Bureau of Economic Analysis (1999).

Figure 4. The Structure of the Total Public Investments in Nine LA Countries
1980-1998. (As Percentage of Total Investments)



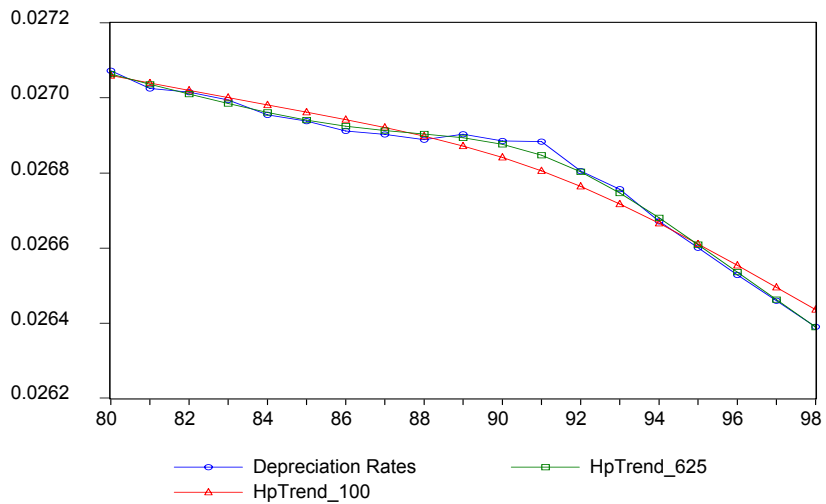
Source: Series are issued from Calderon, Easterly and Serven (2004).

Figure 5. Depreciation Rates $\tilde{\delta}_t^*$ and HP Filtered Depreciation Rates. 1980-1998



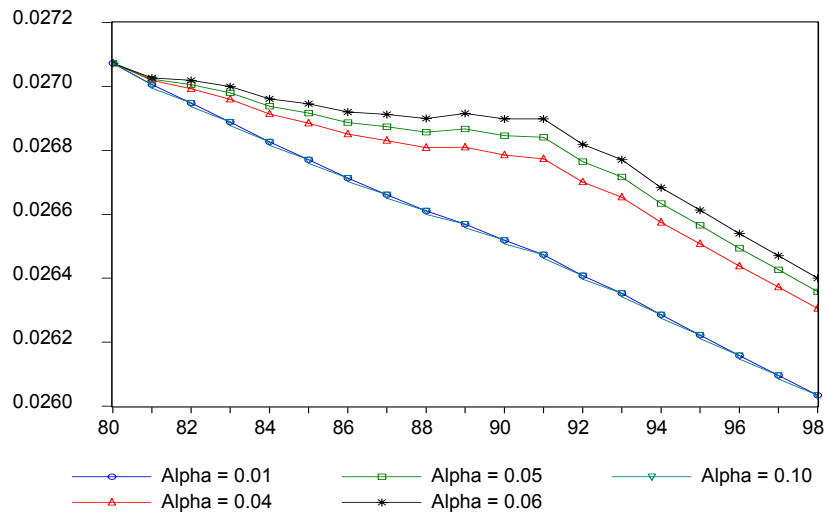
Notes: The series labelled "Depreciation" corresponds to the estimated depreciation rates. The series labelled "HpTrend_100" corresponds to the trend component of these depreciation rates issued from an HP filter with a smoothing parameter equal to 100. The series labelled "HpTrend_625" is the same trend component but with a smoothing parameter equal to 6.25 (Ravn and Uhlig, 2002).

Figure 6. Depreciation Rates $\tilde{\delta}_t^c$ and HP Filtered Depreciation Rates. 1980-1998



Notes: The series labelled "Depreciation" corresponds to the estimated corrected depreciation rates. The series labelled "HpTrend_100" correspond to the trend component of these depreciation rates issued from an HP filter with a smoothing parameter equal to 100. The series labelled "HpTrend_625" is the same trend component but with a smoothing parameter equal to 6.25 (Ravn and Uhlig, 2002).

Figure 7. Depreciation Rates $\tilde{\delta}_t^c$. Sensitivity Analysis to the Parameter α .



Note. The series labelled "Alpha_0.01" corresponds to the estimated values of the corrected depreciation rates based on a calibrated value of $\alpha = 0.01$. The same label is reproduced for the values 0.01, 0.04, 0.05, 0.06 and 0.10.

Figure 8. Estimated Depreciation Rates for Developing Countries (LOESS Smoothing Method). 1960-1998

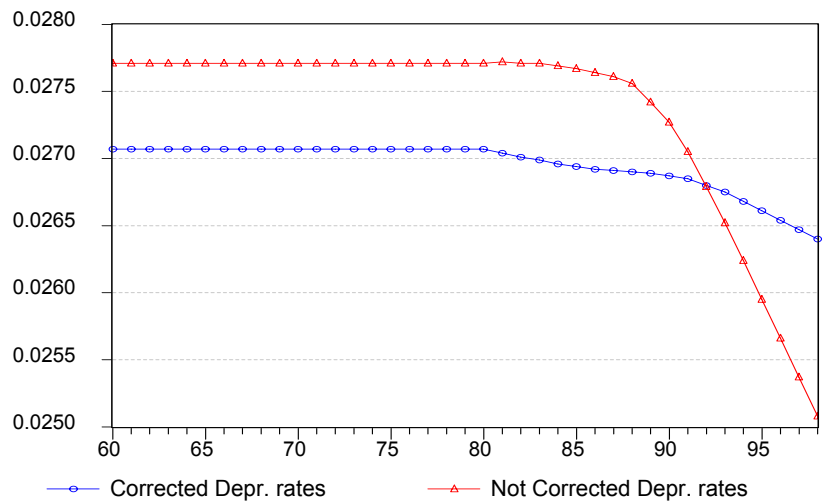
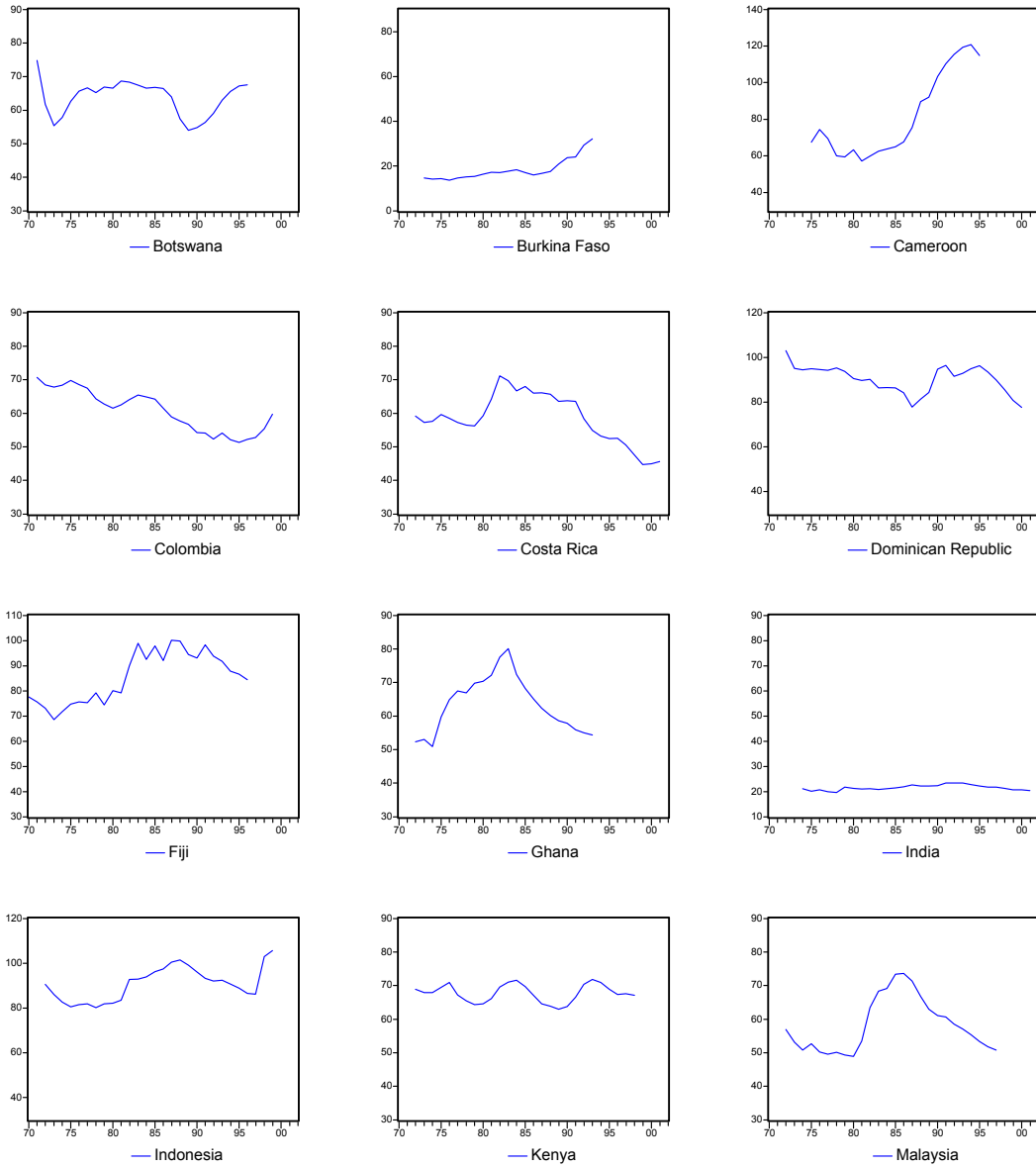
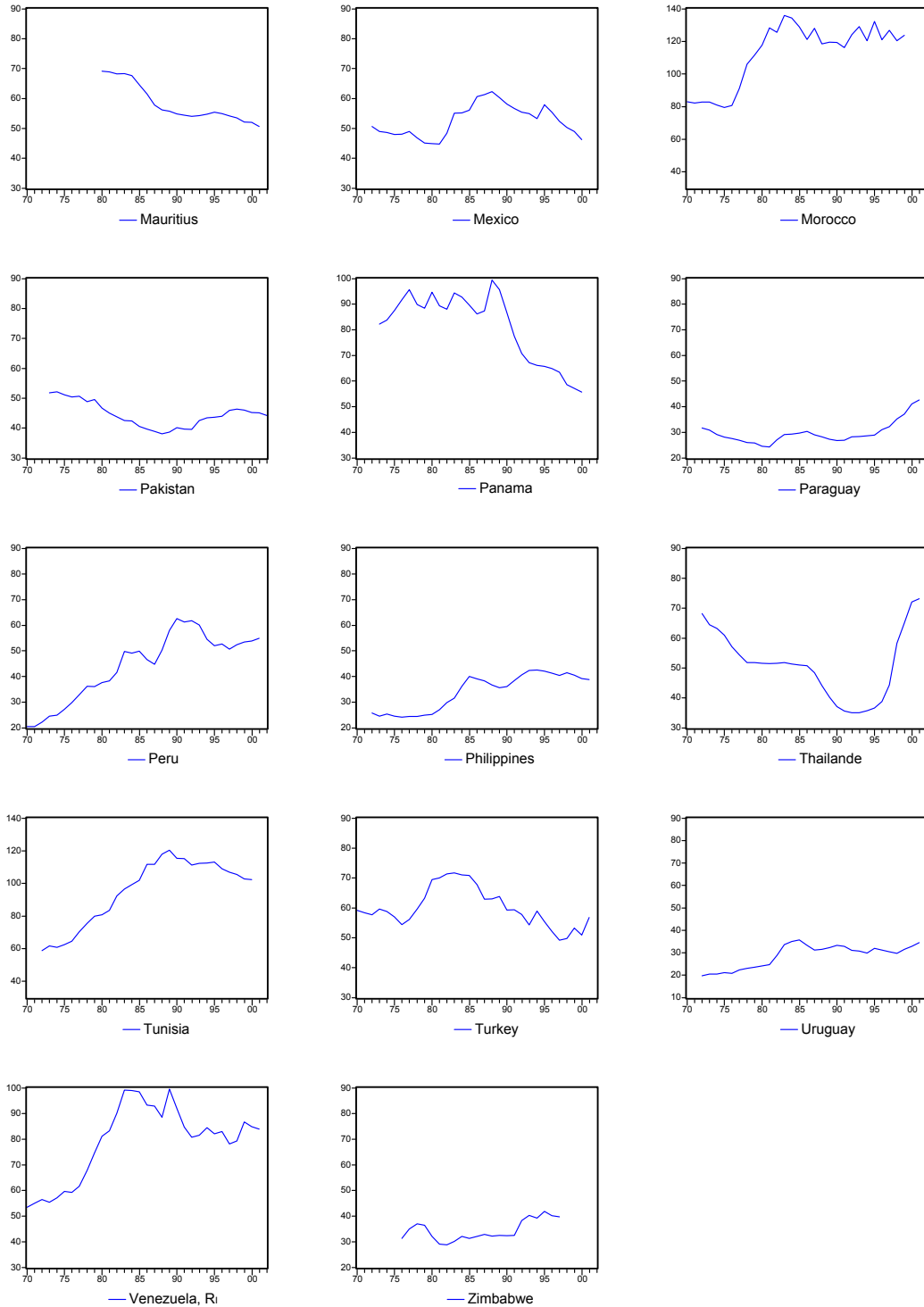


Figure 9. Real Government Net Capital Stocks in 26 Developing Countries
1970-2002 (As a percentage of Real GDP)



Source: Author's estimates

Figure 9. (continued) Real Government Net Capital Stocks in 26 Developing Countries. 1970-2002 (As a percentage of Real GDP)



Source: Author's estimates

Figure 10. Government Net Capital Stocks in Billions LCU (Constant Prices)
for Alternative Depreciation Profiles

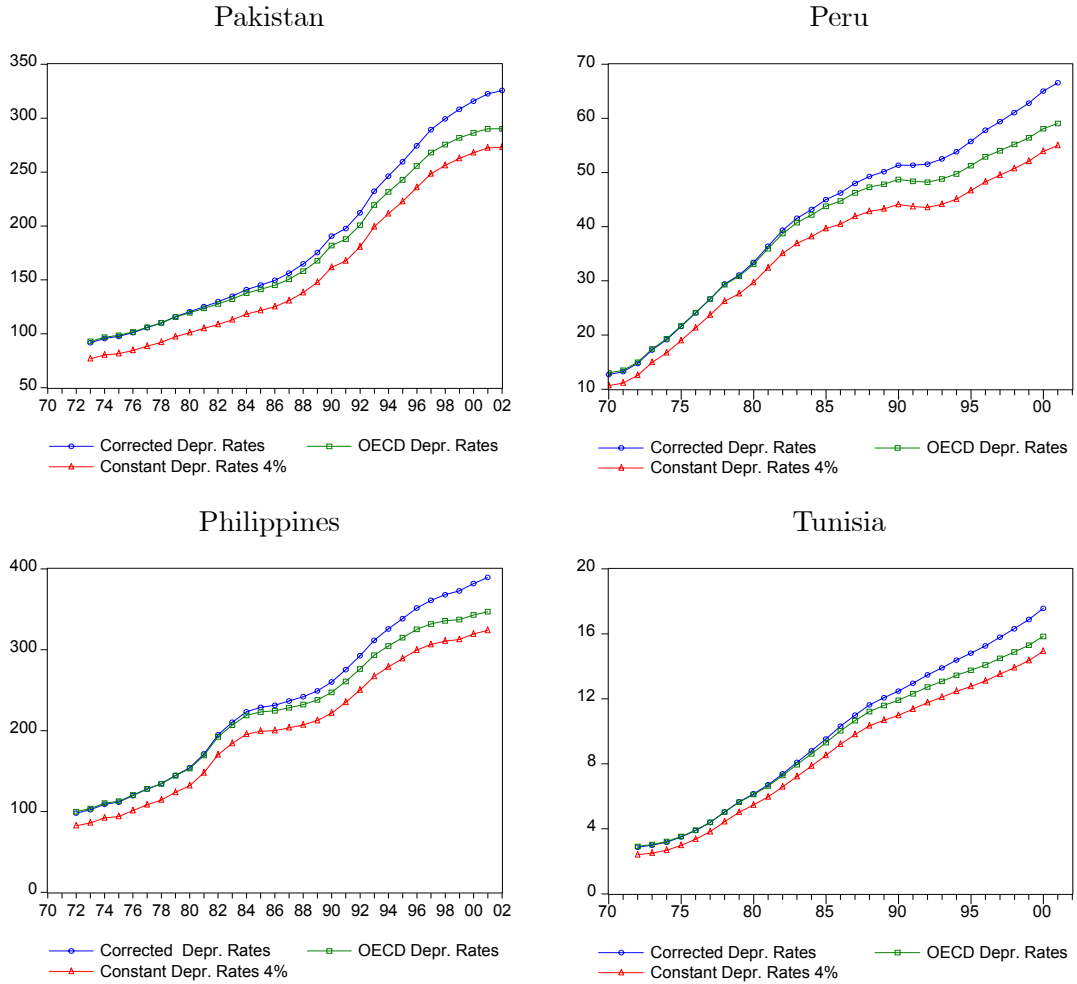


Figure 11. Growth Rates of Government Real Net Capital Stocks for Alternative Depreciation Profiles (in Percentage)

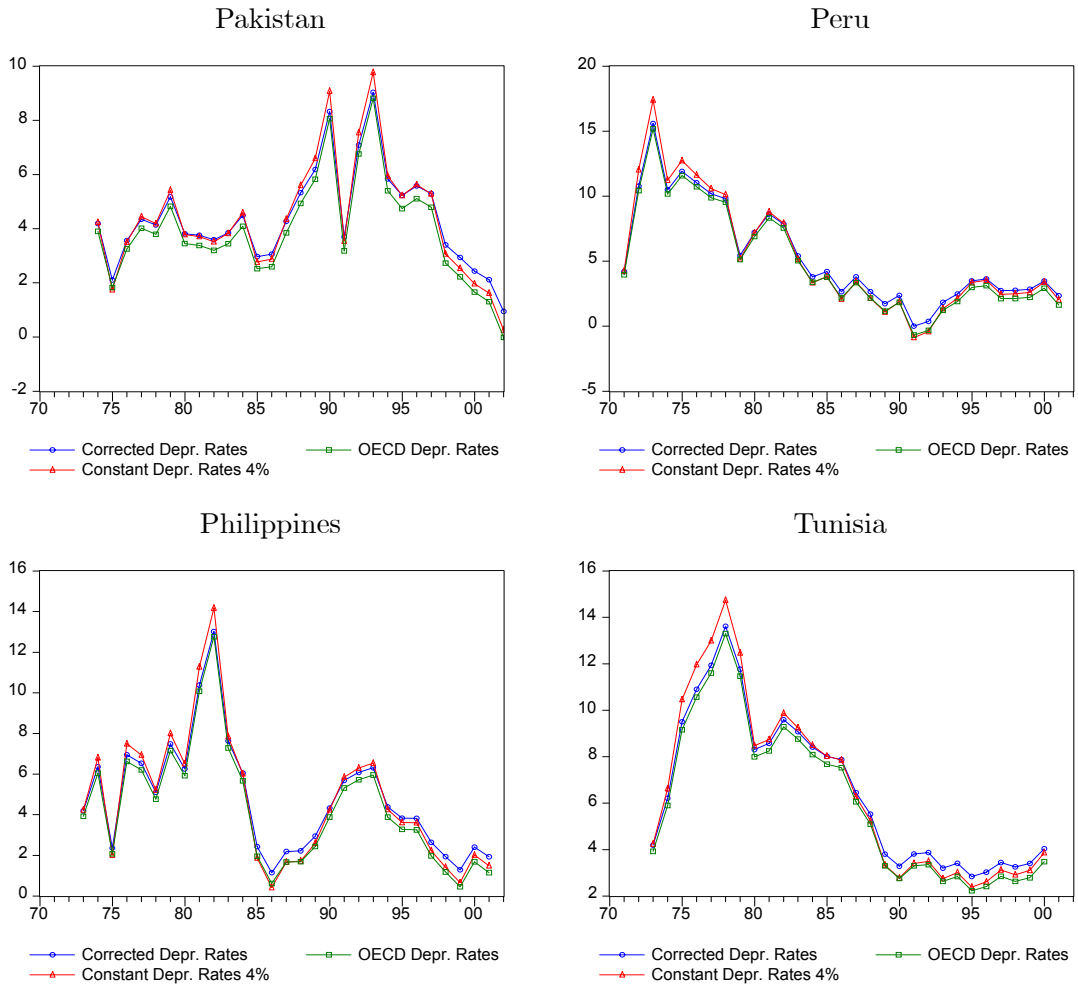


Figure 12. Government Net Capital Stocks in Billions LCU (Constant Prices)
for Alternative Assumptions on the Initial Stock

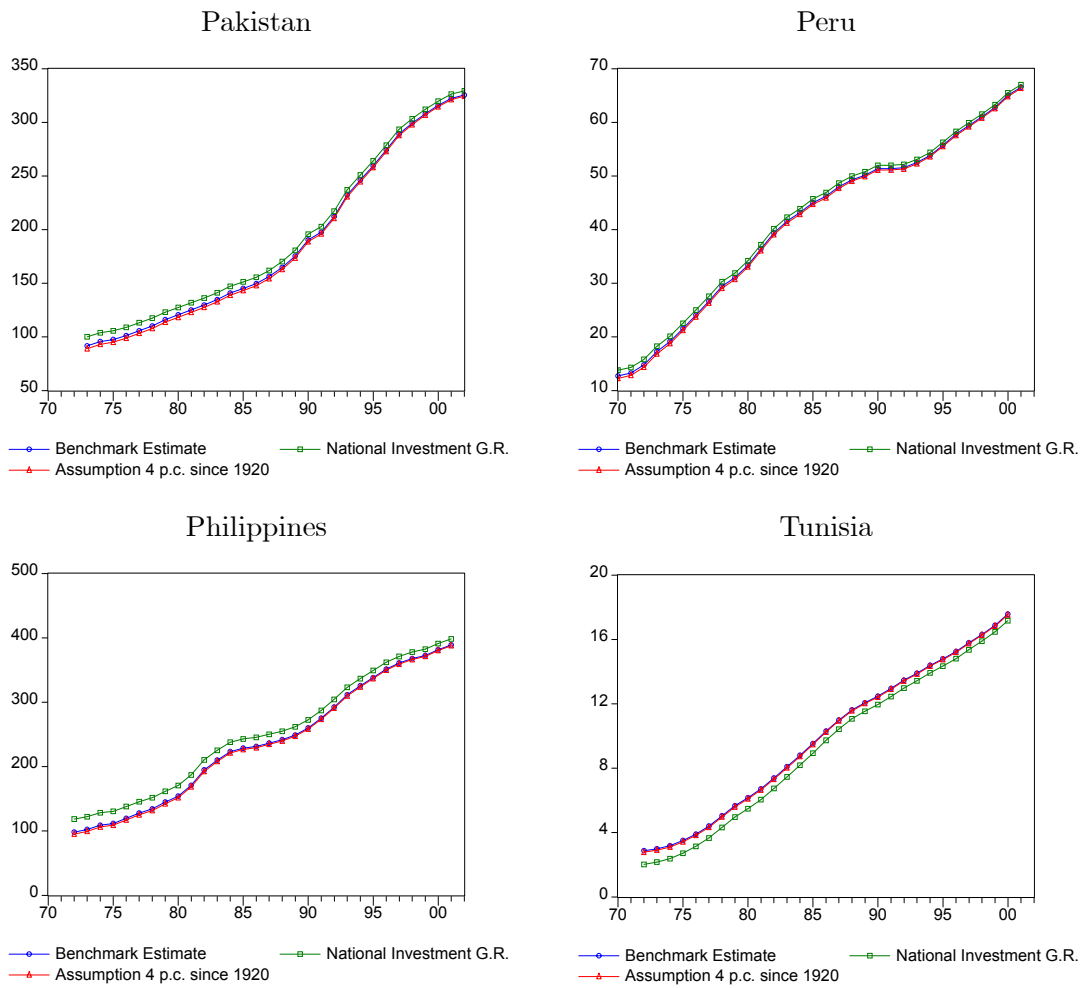


Figure 13. Growth Rates of Government Real Net Capital Stocks for Alternative Assumptions on the Initial Stock (In Percentage)

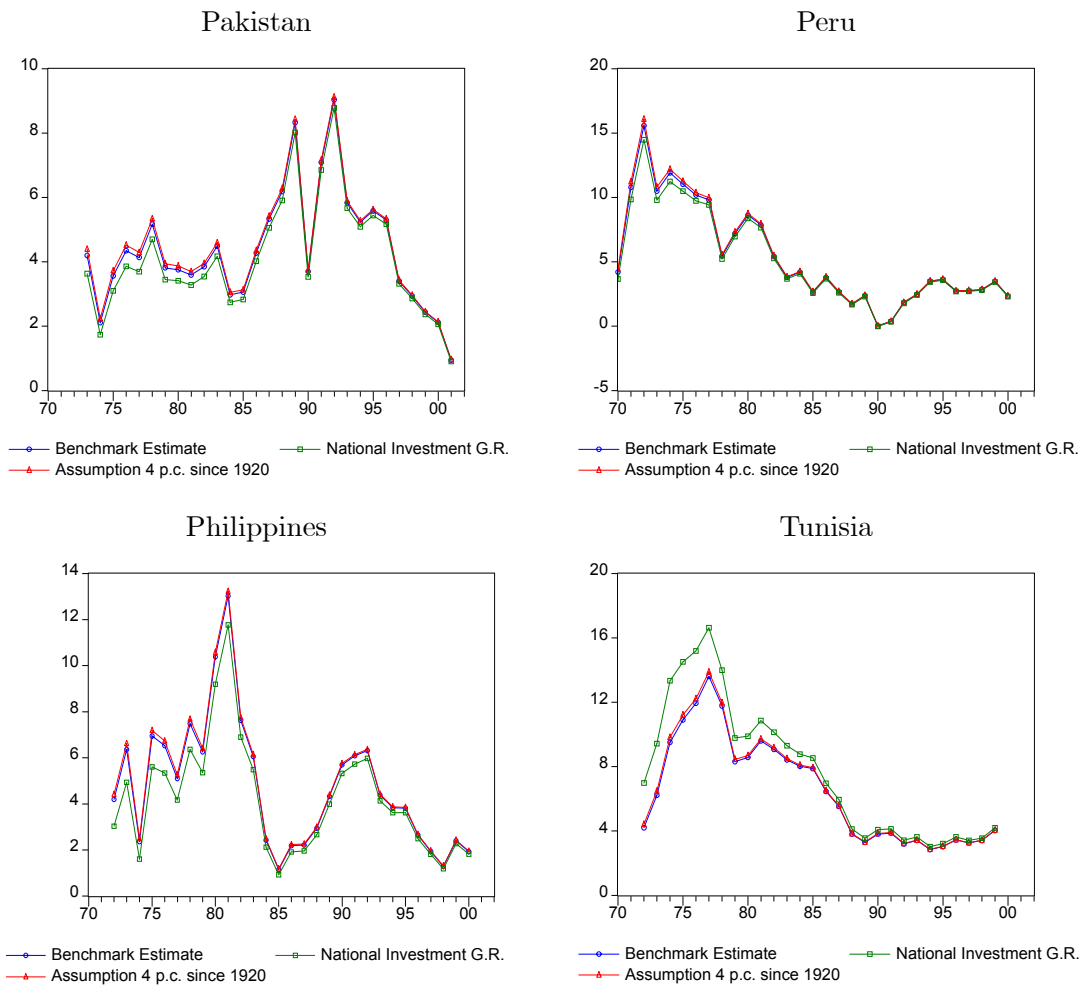


Figure 14. Estimated Efficiency Function

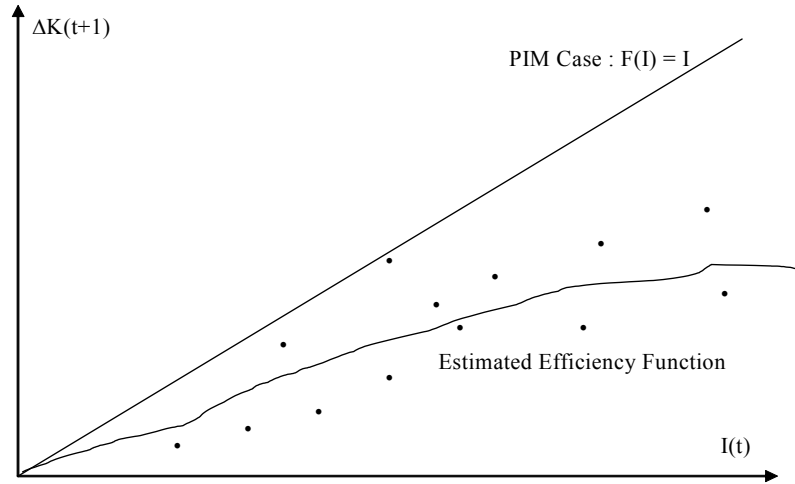
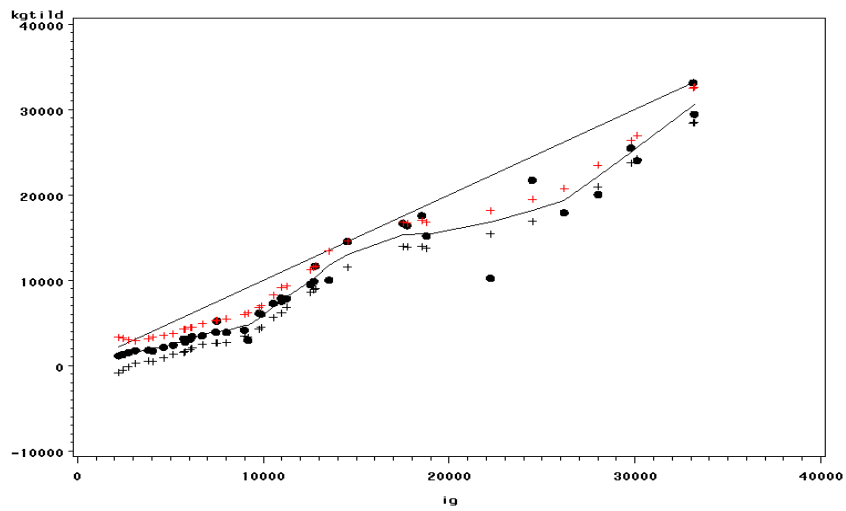


Figure 15. Non-Parametric Estimated Efficiency Function of Public Investments in Streets and Highways . United States, 1951-1992 (US\$ million, Historical Cost)



Notes: For each estimated point, the corresponding 95% confidence limits are represented by a sign "+"

Figure 16. Non-Parametric Estimated Efficiency Functions of Sectoral Public Investments. Colombia, 1980-1994 (US\$ million, current prices)

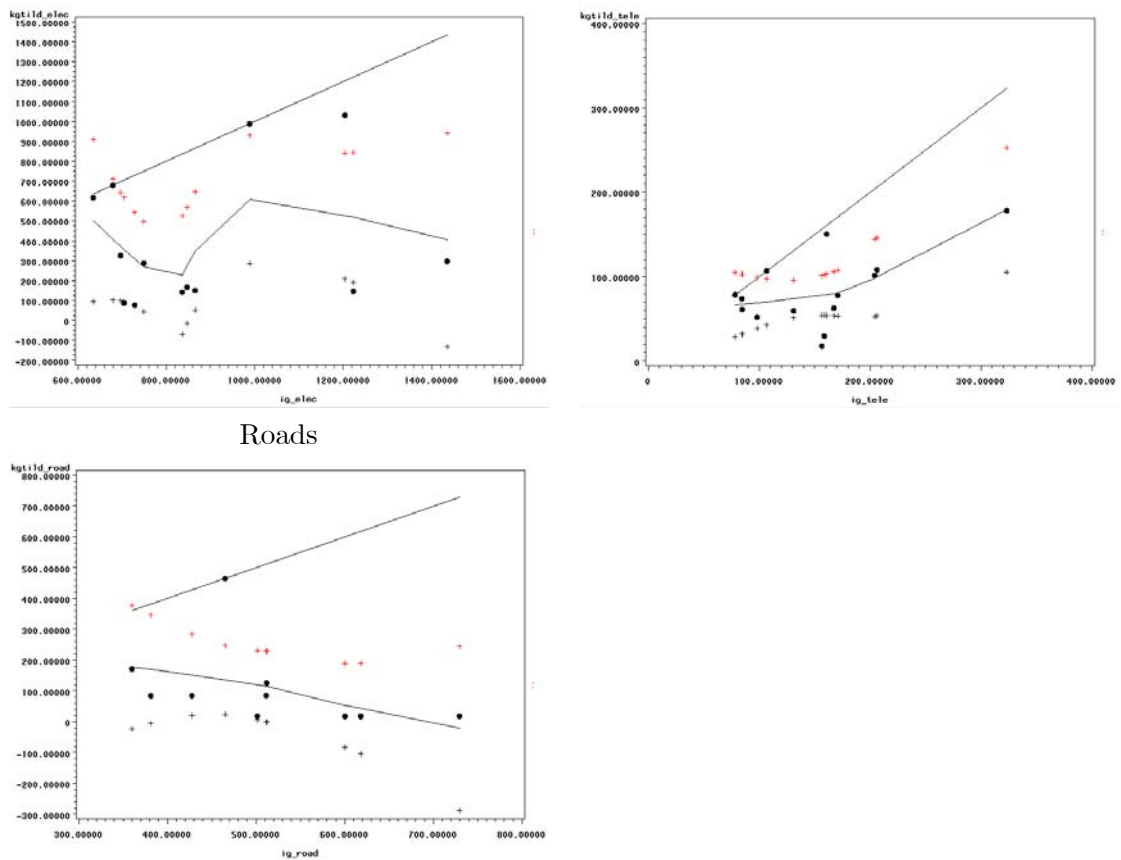
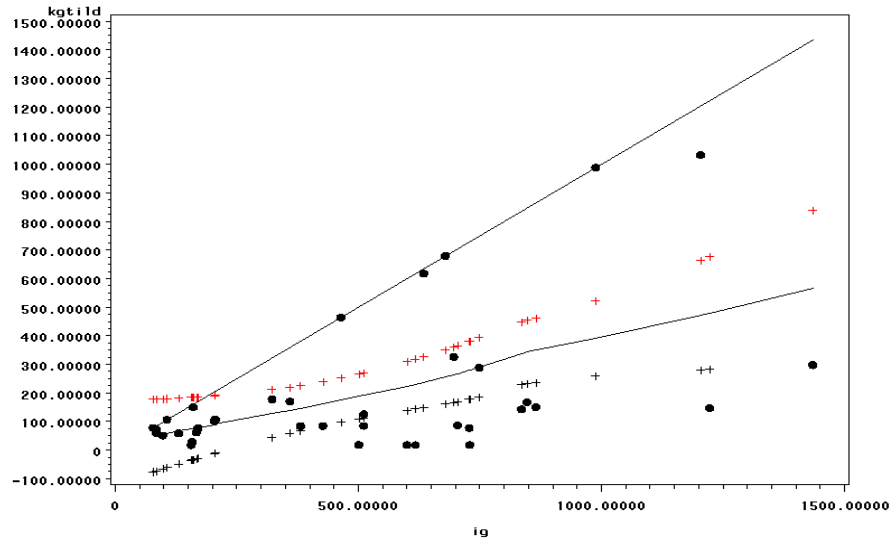
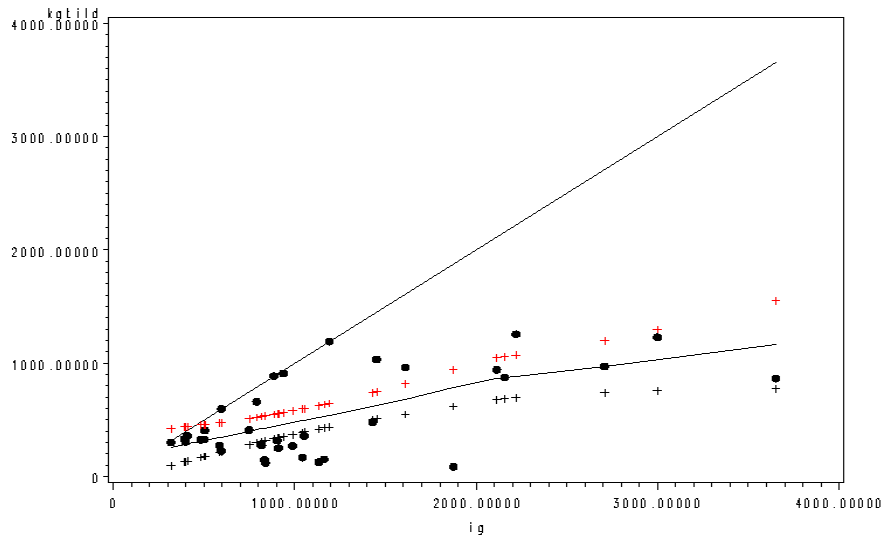


Figure 17. Non-Parametric Estimated Efficiency Function of Total Public Investments. Colombia, 1980-1994 (US\$ million, current prices)



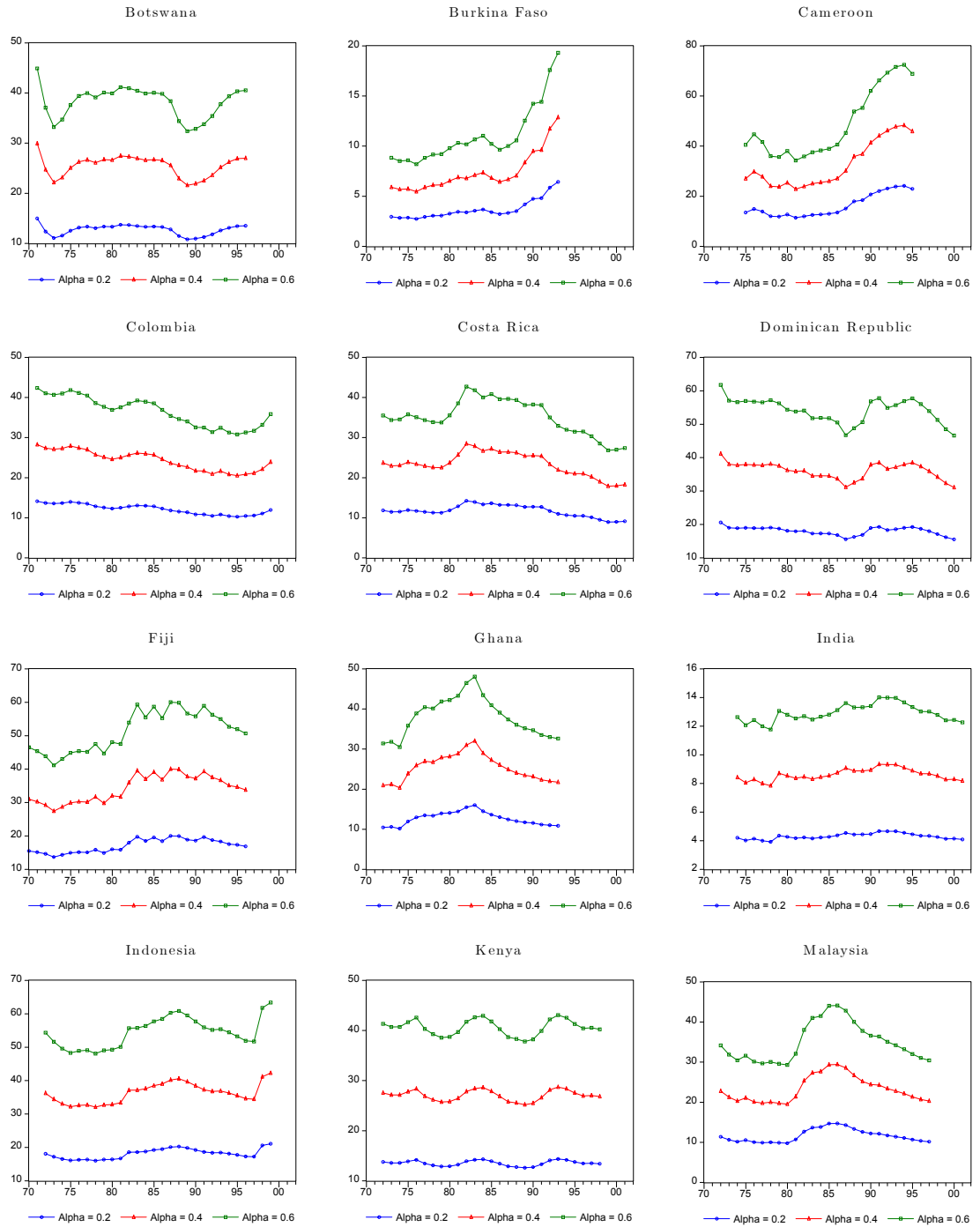
Notes: For each estimated point, the corresponding 95% confidence limits are represented by a sign "+"

Figure 18. Non-Parametric Estimated Efficiency Function of Total Public Investments. Mexico, 1980-1994 (US\$ million, current prices)



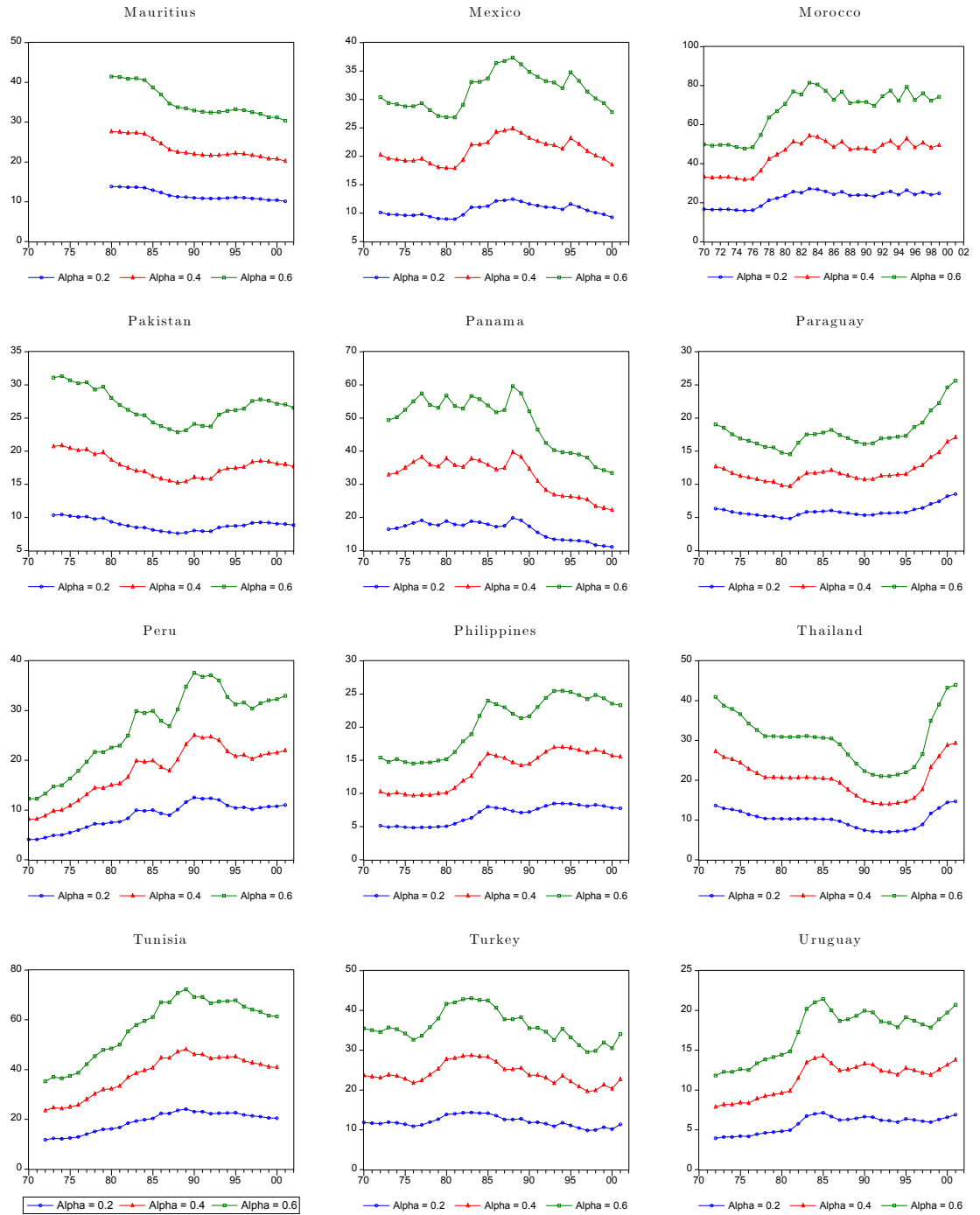
Notes: For each estimated point, the corresponding 95% confidence limits are represented by a sign "+"

Figure 19. Real Government Net Capital Stocks in 26 Developing Countries
1970-2002 (As a percentage of Real GDP)



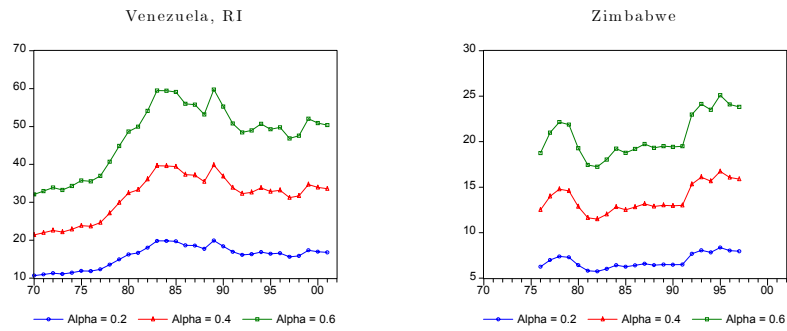
Source: Author's estimates

Figure 19. (continued) Real Government Net Capital Stocks in 26 Developing Countries. 1970-2002 (As a percentage of Real GDP)



Source: Author's estimates

Figure 19. (continued) Real Government Net Capital Stocks in 26 Developing Countries. 1970-2002 (As a percentage of Real GDP)



Source: Author's estimates

B Appendix

B.1 Loess Regressions of Depreciation Rates

Table A1. Loess Regression of $\tilde{\delta}_t^*$ over Time

| Fit Summary | |
|------------------------------|--------------|
| Number of Observations | 19 |
| Smoothing Parameter | 0.921 |
| AICC | -13.49 |
| Degree of Local Polynomials | 1 |
| Points in Local Neighborhood | 17 |
| Residual Sum of Squares | $5.70e^{-6}$ |
| Residual Standard Error | 0.00059 |

Notes. The AICC corresponds to the corrected AIC criterion proposed by Hurvich, Simonoff, et Tsai (1998). Here, the optimal value of the smoothing parameter is chosen to optimise this criterion.

Figure 20: Loess Regression of Depreciation Rates $\tilde{\delta}^*$ over Time. (95% Confidence Limites are represented by symbols + and -)

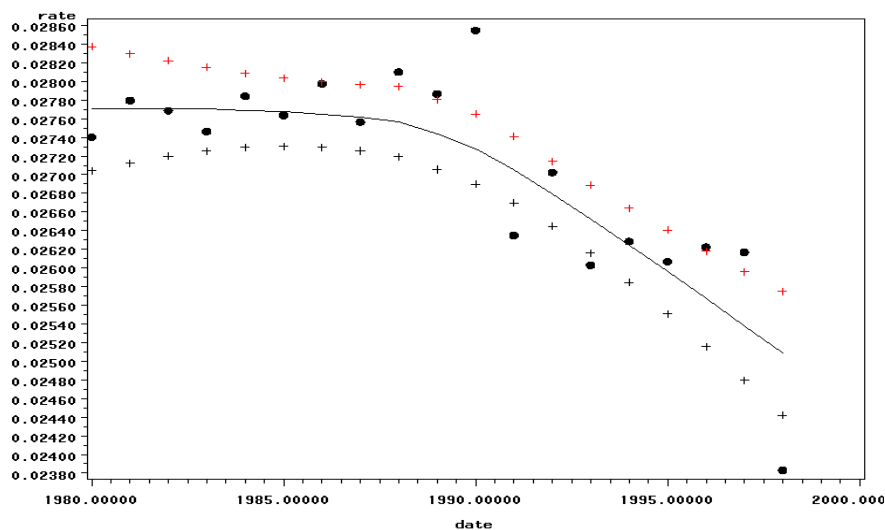
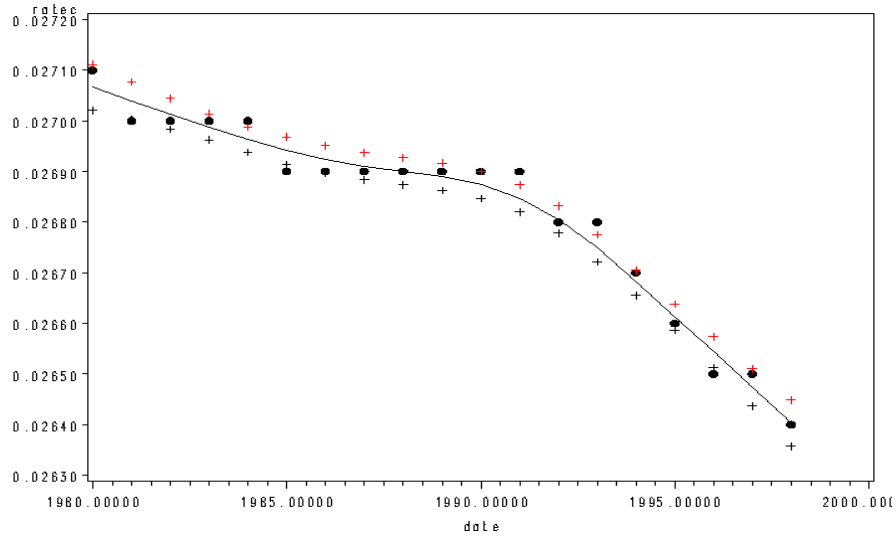


Table A2. Loess Regression of $\tilde{\delta}_t^c$ over Time

| Fit Summary | |
|------------------------------|--------------|
| Number of Observations | 19 |
| Smoothing Parameter | 0.605 |
| AICC | -13.49 |
| Degree of Local Polynomials | 1 |
| Points in Local Neighborhood | 11 |
| Residual Sum of Squares | $1.63e^{-8}$ |
| Residual Standard Error | $3.35e^{-5}$ |

Notes. The AICC corresponds to the corrected AIC criterion proposed by Hurvich, Simonoff, et Tsai (1998). Here, the optimal value of the smoothing parameter is chosen to optimise this criterion.

Figure 21: Loess Regression of Depreciation Rates $\tilde{\delta}^c$ over Time. (95% Confidence Limites are represented by symbols + and -)



B.2 Depreciation Rates

Table A6. Depreciation Rates

| | $\tilde{\delta}_t^c$ | $\tilde{\delta}_t^\#$ |
|---------------|----------------------|-----------------------|
| $t \leq 1980$ | 2.707 | 2.771 |
| 1981 | 2.704 | 2.772 |
| 1982 | 2.701 | 2.771 |
| 1983 | 2.699 | 2.771 |
| 1984 | 2.696 | 2.769 |
| 1985 | 2.694 | 2.767 |
| 1986 | 2.692 | 2.764 |
| 1987 | 2.691 | 2.761 |
| 1988 | 2.690 | 2.756 |
| 1989 | 2.689 | 2.742 |
| 1990 | 2.687 | 2.727 |
| 1991 | 2.685 | 2.705 |
| 1992 | 2.680 | 2.679 |
| 1993 | 2.675 | 2.652 |
| 1994 | 2.668 | 2.624 |
| 1995 | 2.661 | 2.595 |
| 1996 | 2.654 | 2.566 |
| 1997 | 2.647 | 2.537 |
| $t \geq 1998$ | 2.640 | 2.508 |